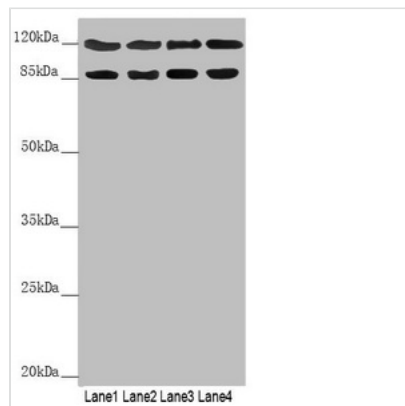




SCYL1 Antibody

Product Code	CSB-PA839356DSR2HU
Storage	Upon receipt, store at -20°C or -80°C. Avoid repeated freeze.
Uniprot No.	Q96KG9
Immunogen	Recombinant Human N-terminal kinase-like protein (460-740AA)
Raised In	Rabbit
Species Reactivity	Human
Tested Applications	ELISA, WB; Recommended dilution: WB:1:1000-1:5000
Form	Liquid
Conjugate	Non-conjugated
Storage Buffer	PBS with 0.02% sodium azide, 50% glycerol, pH7.3.
Purification Method	Antigen Affinity Purified
Isotype	IgG
Clonality	Polyclonal
Alias	N-terminal kinase-like protein (Coated vesicle-associated kinase of 90 kDa) (SCY1-like protein 1) (Telomerase regulation-associated protein) (Telomerase transcriptional element-interacting factor) (Teratoma-associated tyrosine kinase), SCYL1, CVAK90 GKLP NTKL TAPK TEIF TRAP
Immunogen Species	Homo sapiens (Human)
Research Area	Signal Transduction
Target Names	SCYL1

Image



Western blot

All lanes: SCYL1 antibody at 3.15 µg/ml

Lane 1: 293T whole cell lysate

Lane 2: Hela whole cell lysate

Lane 3: 3T3 whole cell lysate

Lane 4: A549 whole cell lysate

Secondary

Goat polyclonal to rabbit IgG at 1/10000 dilution

Predicted band size: 90, 89, 79, 87, 70 kDa

Observed band size: 90, 110 kDa

Usage

For Research Use Only. Not for use in diagnostic or therapeutic procedures.