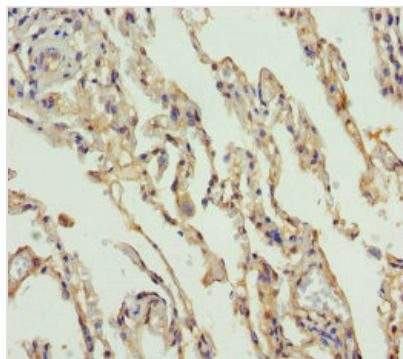




SLC34A1 Antibody

Product Code	CSB-PA733714DSR1HU
Storage	Upon receipt, store at -20°C or -80°C. Avoid repeated freeze.
Uniprot No.	Q06495
Immunogen	Recombinant Human Sodium-dependent phosphate transport protein 2A protein (1-103AA)
Raised In	Rabbit
Species Reactivity	Human
Tested Applications	ELISA, IHC; Recommended dilution: IHC:1:20-1:200
Form	Liquid
Conjugate	Non-conjugated
Storage Buffer	PBS with 0.02% sodium azide, 50% glycerol, pH7.3.
Purification Method	Antigen Affinity Purified
Isotype	IgG
Clonality	Polyclonal
Alias	Sodium-dependent phosphate transport protein 2A (Sodium-phosphate transport protein 2A) (Na(+)-dependent phosphate cotransporter 2A) (NaPi-3) (Sodium/phosphate cotransporter 2A) (Na+)/Pi cotransporter 2A) (NaPi-2a) (Solute carrier family 34 member 1), SLC34A1, NPT2 SLC17A2
Immunogen Species	Homo sapiens (Human)
Research Area	Signal Transduction
Target Names	SLC34A1

Image



Immunohistochemistry of paraffin-embedded human lung tissue using CSB-PA733714DSR1HU at dilution of 1:100