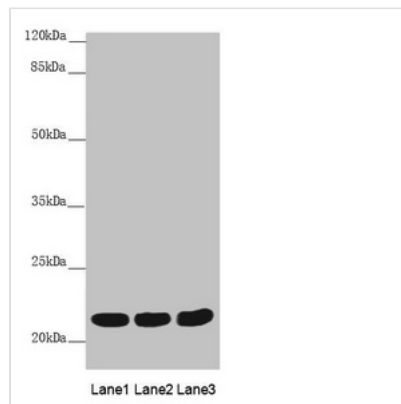




MYL3 Antibody

Product Code	CSB-PA015310DSR1HU
Storage	Upon receipt, store at -20°C or -80°C. Avoid repeated freeze.
Uniprot No.	P08590
Immunogen	Recombinant Human Myosin light chain 3 protein (1-195AA)
Raised In	Rabbit
Species Reactivity	Human, Mouse, Rat
Tested Applications	ELISA, WB, IHC; Recommended dilution: WB:1:1000-1:5000, IHC:1:20-1:200
Form	Liquid
Conjugate	Non-conjugated
Storage Buffer	PBS with 0.02% sodium azide, 50% glycerol, pH7.3.
Purification Method	Antigen Affinity Purified
Isotype	IgG
Clonality	Polyclonal
Alias	Myosin light chain 3 (Cardiac myosin light chain 1) (CMLC1) (Myosin light chain 1, slow-twitch muscle B/ventricular isoform) (MLC1SB) (Ventricular myosin alkali light chain) (Ventricular myosin light chain 1) (VLC1) (Ventricular/slow twitch myosin alkali light chain) (MLC-IV/sb), MYL3
Immunogen Species	Homo sapiens (Human)
Research Area	Signal Transduction
Target Names	MYL3

Image



Western blot

All lanes: MYL3 antibody at 3.78 µg/ml

Lane 1: Mouse heart tissue

Lane 2: Mouse skeletal muscle tissue

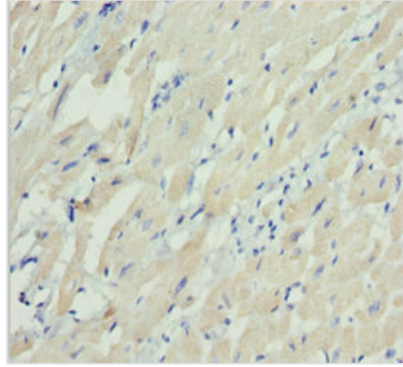
Lane 3: Rat heart tissue

Secondary

Goat polyclonal to rabbit IgG at 1/10000 dilution

Predicted band size: 22 kDa

Observed band size: 22 kDa



Immunohistochemistry of paraffin-embedded human heart tissue using CSB-PA015310DSR1HU at dilution of 1:100

Usage

For Research Use Only. Not for use in diagnostic or therapeutic procedures.