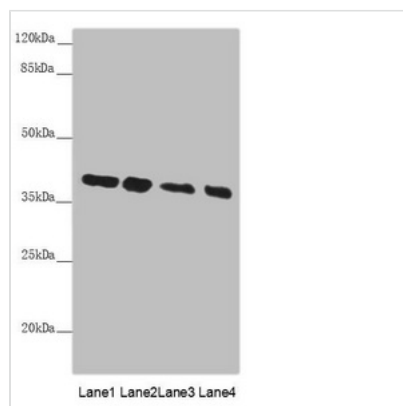




PPP1R8 Antibody

Product Code	CSB-PA618641DSR1HU
Storage	Upon receipt, store at -20°C or -80°C. Avoid repeated freeze.
Uniprot No.	Q12972
Immunogen	Recombinant Human Nuclear inhibitor of protein phosphatase 1 protein (1-209AA)
Raised In	Rabbit
Species Reactivity	Human
Tested Applications	ELISA, WB, IHC, IF; Recommended dilution: WB:1:500-1:2000, IHC:1:20-1:200, IF:1:50-1:200
Form	Liquid
Conjugate	Non-conjugated
Storage Buffer	PBS with 0.02% sodium azide, 50% glycerol, pH7.3.
Purification Method	Antigen Affinity Purified
Isotype	IgG
Clonality	Polyclonal
Alias	Nuclear inhibitor of protein phosphatase 1 (NIPP-1) (Protein phosphatase 1 regulatory inhibitor subunit 8) [Includes: Activator of RNA decay (EC 3.1.4.-) (ARD-1)], PPP1R8, ARD1 NIPP1
Immunogen Species	Homo sapiens (Human)
Research Area	Signal Transduction
Target Names	PPP1R8

Image



Western blot

All lanes: PPP1R8 antibody at 4.73µg/ml

Lane 1: PC-3 whole cell lysate

Lane 2: HL60 whole cell lysate

Lane 3: HepG2 whole cell lysate

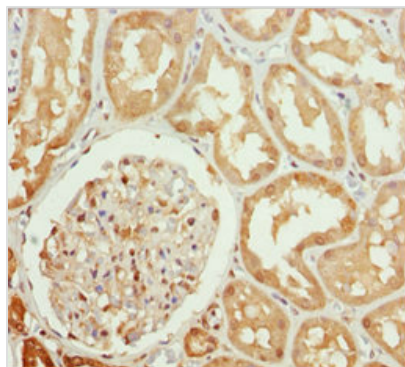
Lane 4: Hela whole cell lysate

Secondary

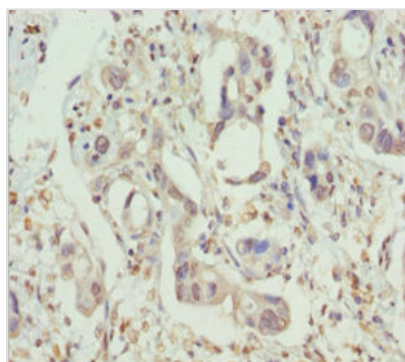
Goat polyclonal to rabbit IgG at 1/10000 dilution

Predicted band size: 39, 23, 14 kDa

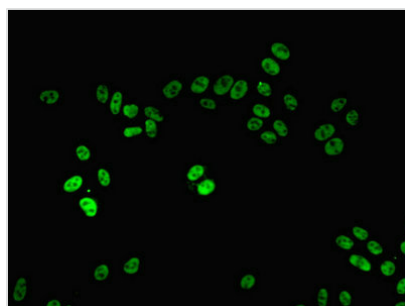
Observed band size: 39 kDa



Immunohistochemistry of paraffin-embedded human kidney tissue using CSB-PA618641DSR1HU at dilution of 1:100



Immunohistochemistry of paraffin-embedded human pancreatic cancer using CSB-PA618641DSR1HU at dilution of 1:100



Immunofluorescent analysis of HepG2 cells using CSB-PA618641DSR1HU at dilution of 1:100 and Alexa Fluor 488-conjugated AffiniPure Goat Anti-Rabbit IgG(H+L)

Usage

For Research Use Only. Not for use in diagnostic or therapeutic procedures.