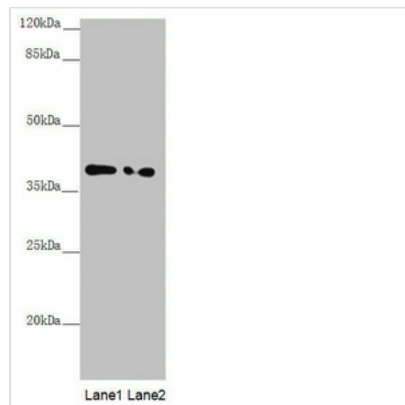




# PPP1R8 Antibody

|                            |  |
|----------------------------|--|
| <b>Product Code</b>        | CSB-PA618641DSR2HU   |
| <b>Storage</b>             | Upon receipt, store at -20°C or -80°C. Avoid repeated freeze.  |
| <b>Uniprot No.</b>         | Q12972   |
| <b>Immunogen</b>           | Recombinant Human Nuclear inhibitor of protein phosphatase 1 protein (1-209AA)   |
| <b>Raised In</b>           | Rabbit   |
| <b>Species Reactivity</b>  | Human  |
| <b>Tested Applications</b> | ELISA, WB, IHC, IF; Recommended dilution: WB:1:500-1:2000, IHC:1:20-1:200, IF:1:50-1:200   |
| <b>Form</b>                | Liquid   |
| <b>Conjugate</b>           | Non-conjugated   |
| <b>Storage Buffer</b>      | PBS with 0.02% sodium azide, 50% glycerol, pH7.3.  |
| <b>Purification Method</b> | Antigen Affinity Purified  |
| <b>Isotype</b>             | IgG  |
| <b>Clonality</b>           | Polyclonal   |
| <b>Alias</b>               | Nuclear inhibitor of protein phosphatase 1 (NIPP-1) (Protein phosphatase 1 regulatory inhibitor subunit 8) [Includes: Activator of RNA decay (EC 3.1.4.-) (ARD-1)], PPP1R8, ARD1 NIPP1 |
| <b>Immunogen Species</b>   | Homo sapiens (Human)   |
| <b>Research Area</b>       | Signal Transduction  |
| <b>Target Names</b>        | PPP1R8   |

## Image



### Western blot

All lanes: PPP1R8 antibody at 1.11µg/ml

Lane 1: PC-3 whole cell lysate

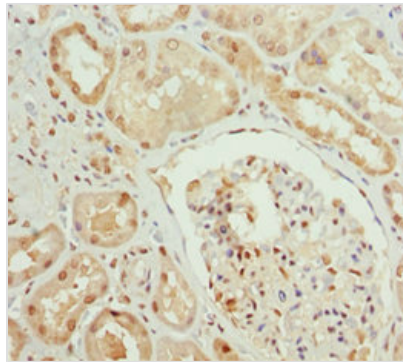
Lane 2: HL60 whole cell lysate

Secondary

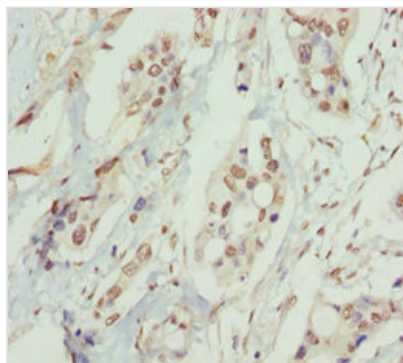
Goat polyclonal to rabbit IgG at 1/10000 dilution

Predicted band size: 39, 23, 14 kDa

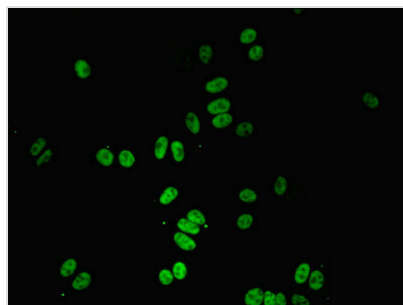
Observed band size: 39 kDa



Immunohistochemistry of paraffin-embedded human kidney tissue using CSB-PA618641DSR2HU at dilution of 1:100



Immunohistochemistry of paraffin-embedded human pancreatic cancer using CSB-PA618641DSR2HU at dilution of 1:100



Immunofluorescent analysis of HepG2 cells using CSB-PA618641DSR2HU at dilution of 1:100 and Alexa Fluor 488-conjugated AffiniPure Goat Anti-Rabbit IgG(H+L)