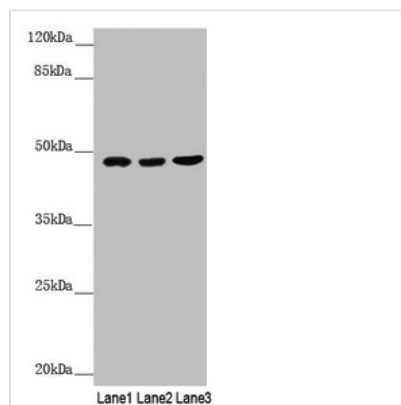




BCS1L Antibody

Product Code	CSB-PA897463ESR1HU
Storage	Upon receipt, store at -20°C or -80°C. Avoid repeated freeze.
Uniprot No.	Q9Y276
Immunogen	Recombinant Human Mitochondrial chaperone BCS1 protein (33-240AA)
Raised In	Rabbit
Species Reactivity	Human
Tested Applications	ELISA, WB, IHC; Recommended dilution: WB:1:1000-1:5000, IHC:1:20-1:200
Form	Liquid
Conjugate	Non-conjugated
Storage Buffer	PBS with 0.02% sodium azide, 50% glycerol, pH7.3.
Purification Method	Antigen Affinity Purified
Isotype	IgG
Clonality	Polyclonal
Alias	Mitochondrial chaperone BCS1 (h-BCS1) (BCS1-like protein), BCS1L, BCS1
Immunogen Species	Homo sapiens (Human)
Research Area	Signal Transduction
Target Names	BCS1L

Image



Western blot

All lanes: BCS1L antibody at 3.07µg/ml

Lane 1: A549 whole cell lysate

Lane 2: 293T whole cell lysate

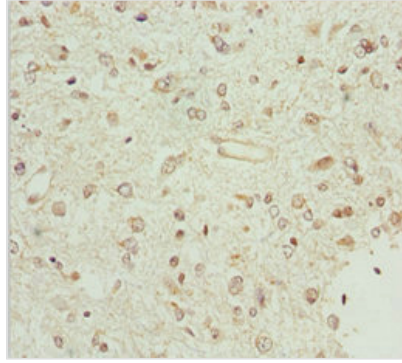
Lane 3: HeLa whole cell lysate

Secondary

Goat polyclonal to rabbit IgG at 1/10000 dilution

Predicted band size: 48 kDa

Observed band size: 48 kDa



Immunohistochemistry of paraffin-embedded human glioma using CSB-PA897463ESR1HU at dilution of 1:100

Usage

For Research Use Only. Not for use in diagnostic or therapeutic procedures.