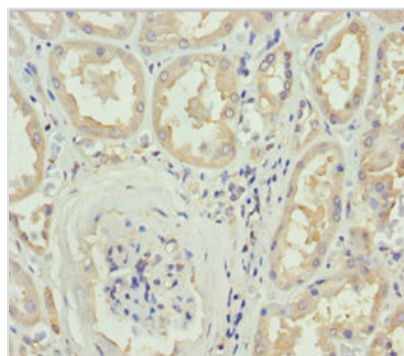




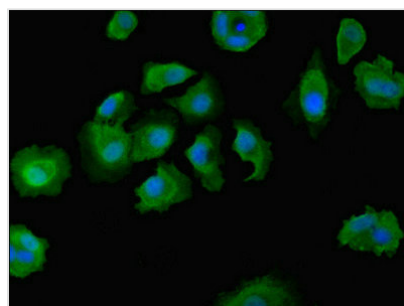
DOCK8 Antibody

Product Code	CSB-PA836734ESR1HU
Storage	Upon receipt, store at -20°C or -80°C. Avoid repeated freeze.
Uniprot No.	Q8NF50
Immunogen	Recombinant Human Deducator of cytokinesis protein 8 protein (1900-2099AA)
Raised In	Rabbit
Species Reactivity	Human
Tested Applications	ELISA, IHC, IF; Recommended dilution: IHC:1:20-1:200, IF:1:50-1:200
Form	Liquid
Conjugate	Non-conjugated
Storage Buffer	PBS with 0.02% sodium azide, 50% glycerol, pH7.3.
Purification Method	Antigen Affinity Purified
Isotype	IgG
Clonality	Polyclonal
Alias	Deducator of cytokinesis protein 8, DOCK8
Immunogen Species	Homo sapiens (Human)
Research Area	Cardiovascular
Target Names	DOCK8

Image



Immunohistochemistry of paraffin-embedded human kidney tissue using CSB-PA836734ESR1HU at dilution of 1:100



Immunofluorescent analysis of MCF-7 cells using CSB-PA836734ESR1HU at dilution of 1:100 and Alexa Fluor 488-conjugated AffiniPure Goat Anti-Rabbit IgG(H+L)



Usage

For Research Use Only. Not for use in diagnostic or therapeutic procedures.