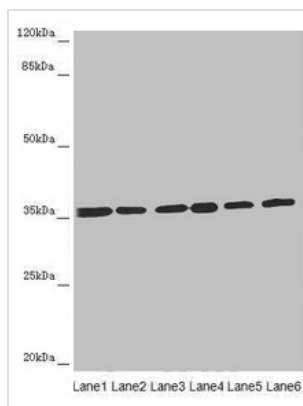




ETFA Antibody

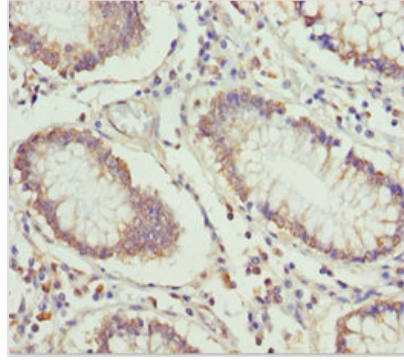
Product Code	CSB-PA007844ESR1HU
Storage	Upon receipt, store at -20°C or -80°C. Avoid repeated freeze.
Uniprot No.	P13804
Immunogen	Recombinant Human Electron transfer flavoprotein subunit alpha, mitochondrial protein (1-333AA)
Raised In	Rabbit
Species Reactivity	Human
Tested Applications	ELISA, WB, IHC; Recommended dilution: WB:1:1000-1:5000, IHC:1:20-1:200
Form	Liquid
Conjugate	Non-conjugated
Storage Buffer	PBS with 0.02% sodium azide, 50% glycerol, pH7.3.
Purification Method	Antigen Affinity Purified
Isotype	IgG
Clonality	Polyclonal
Alias	Electron transfer flavoprotein subunit alpha, mitochondrial (Alpha-ETF), ETFA
Immunogen Species	Homo sapiens (Human)
Research Area	Signal Transduction
Target Names	ETFA

Image

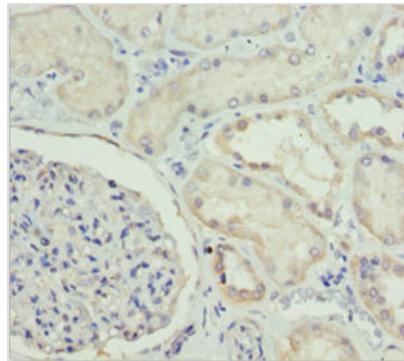


Western blot

All lanes: ETFA antibody at 4.34µg/ml
 Lane 1: A431 whole cell lysate
 Lane 2: Hela whole cell lysate
 Lane 3: K562 whole cell lysate
 Lane 4: A549 whole cell lysate
 Lane 5: HepG2 whole cell lysate
 Lane 6: MCF-7 whole cell lysate
 Secondary
 Goat polyclonal to rabbit IgG at 1/10000 dilution
 Predicted band size: 36, 31 kDa
 Observed band size: 36 kDa



Immunohistochemistry of paraffin-embedded human colon cancer using CSB-PA007844ESR1HU at dilution of 1:100



Immunohistochemistry of paraffin-embedded human kidney tissue using CSB-PA007844ESR1HU at dilution of 1:100

Usage

For Research Use Only. Not for use in diagnostic or therapeutic procedures.