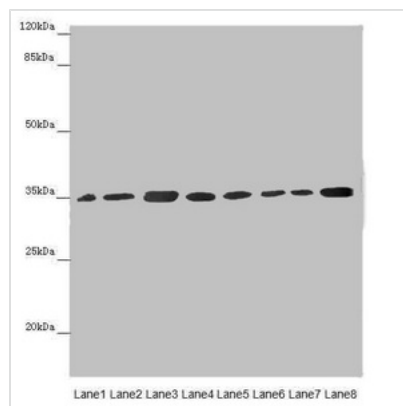




ETFA Antibody

Product Code	CSB-PA007844ESR2HU
Storage	Upon receipt, store at -20°C or -80°C. Avoid repeated freeze.
Uniprot No.	P13804
Immunogen	Recombinant Human Electron transfer flavoprotein subunit alpha, mitochondrial protein (1-333AA)
Raised In	Rabbit
Species Reactivity	Human, Mouse
Tested Applications	ELISA, WB, IHC; Recommended dilution: WB:1:1000-1:5000, IHC:1:20-1:200
Form	Liquid
Conjugate	Non-conjugated
Storage Buffer	PBS with 0.02% sodium azide, 50% glycerol, pH7.3.
Purification Method	Antigen Affinity Purified
Isotype	IgG
Clonality	Polyclonal
Alias	Electron transfer flavoprotein subunit alpha, mitochondrial (Alpha-ETF), ETFA
Immunogen Species	Homo sapiens (Human)
Research Area	Signal Transduction
Target Names	ETFA

Image



Western blot

All lanes: ETFA antibody at 2.88µg/ml

Lane 1: Mouse small intestine tissue

Lane 2: Mouse liver tissue

Lane 3: A431 whole cell lysate

Lane 4: HeLa whole cell lysate

Lane 5: K562 whole cell lysate

Lane 6: A549 whole cell lysate

Lane 7: HepG2 whole cell lysate

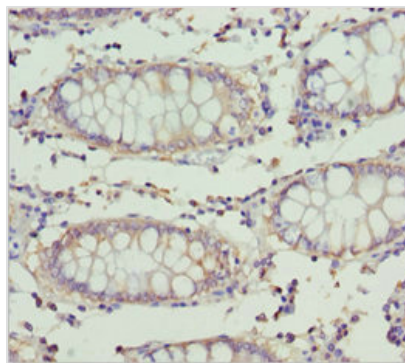
Lane 8: MCF-7 whole cell lysate

Secondary

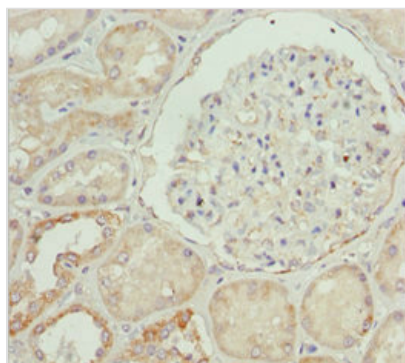
Goat polyclonal to rabbit IgG at 1/10000 dilution

Predicted band size: 36, 31 kDa

Observed band size: 36 kDa



Immunohistochemistry of paraffin-embedded human colon cancer using CSB-PA007844ESR2HU at dilution of 1:100



Immunohistochemistry of paraffin-embedded human kidney tissue using CSB-PA007844ESR2HU at dilution of 1:100

Usage

For Research Use Only. Not for use in diagnostic or therapeutic procedures.