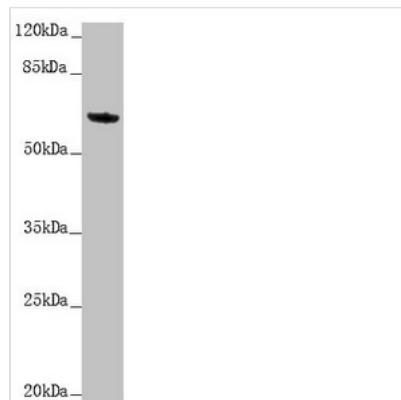




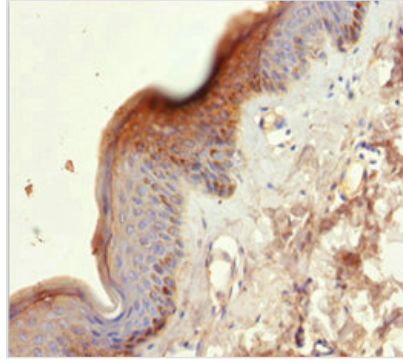
KRT6A Antibody

Product Code	CSB-PA012561ESR1HU
Storage	Upon receipt, store at -20°C or -80°C. Avoid repeated freeze.
Uniprot No.	P02538
Immunogen	Recombinant Human Keratin, type II cytoskeletal 6A protein (305-564AA)
Raised In	Rabbit
Species Reactivity	Human, Mouse
Tested Applications	ELISA, WB, IHC; Recommended dilution: WB:1:1000-1:5000, IHC:1:20-1:200
Form	Liquid
Conjugate	Non-conjugated
Storage Buffer	PBS with 0.02% sodium azide, 50% glycerol, pH7.3.
Purification Method	Antigen Affinity Purified
Isotype	IgG
Clonality	Polyclonal
Alias	Keratin, type II cytoskeletal 6A (Cytokeratin-6A) (CK-6A) (Cytokeratin-6D) (CK-6D) (Keratin-6A) (K6A) (Type-II keratin Kb6) (allergen Hom s 5), KRT6A, K6A KRT6D
Immunogen Species	Homo sapiens (Human)
Research Area	Tags & Cell Markers
Target Names	KRT6A

Image



Western blot
 All lanes: KRT6A antibody at 5.06 µg/ml +
 Mouse lung tissue
 Secondary
 Goat polyclonal to rabbit IgG at 1/10000 dilution
 Predicted band size: 60 kDa
 Observed band size: 60 kDa



Immunohistochemistry of paraffin-embedded human skin tissue using CSB-PA012561ESR1HU at dilution of 1:100

Usage

For Research Use Only. Not for use in diagnostic or therapeutic procedures.