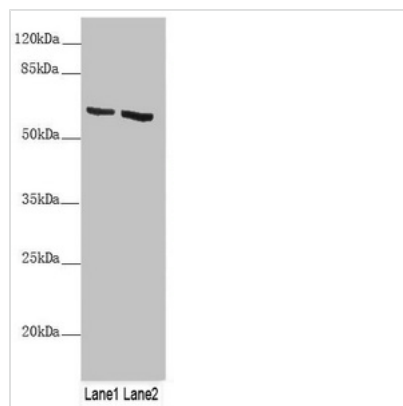




KRT6B Antibody

Product Code	CSB-PA012562ESR2HU
Storage	Upon receipt, store at -20°C or -80°C. Avoid repeated freeze.
Uniprot No.	P04259
Immunogen	Recombinant Human Keratin, type II cytoskeletal 6B protein (1-280AA)
Raised In	Rabbit
Species Reactivity	Human
Tested Applications	ELISA, WB; Recommended dilution: WB:1:1000-1:5000
Form	Liquid
Conjugate	Non-conjugated
Storage Buffer	PBS with 0.02% sodium azide, 50% glycerol, pH7.3.
Purification Method	Antigen Affinity Purified
Isotype	IgG
Clonality	Polyclonal
Alias	Keratin, type II cytoskeletal 6B (Cytokeratin-6B) (CK-6B) (Keratin-6B) (K6B) (Type-II keratin Kb10), KRT6B, K6B KRTL1
Immunogen Species	Homo sapiens (Human)
Research Area	Tags & Cell Markers
Target Names	KRT6B

Image



Western blot

All lanes: KRT6B antibody at 4.29 µg/ml

Lane 1: A431 whole cell lysate

Lane 2: A375 whole cell lysate

Secondary

Goat polyclonal to rabbit IgG at 1/10000 dilution

Predicted band size: 60 kDa

Observed band size: 60 kDa

Usage

For Research Use Only. Not for use in diagnostic or therapeutic procedures.