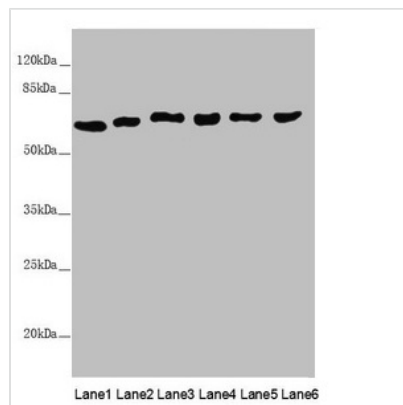




# MCCC2 Antibody

<b>Product Code</b>	CSB-PA867199ESR1HU
<b>Storage</b>	Upon receipt, store at -20°C or -80°C. Avoid repeated freeze.
<b>Uniprot No.</b>	Q9HCC0
<b>Immunogen</b>	Recombinant Human Methylcrotonoyl-CoA carboxylase beta chain, mitochondrial protein (284-563AA)
<b>Raised In</b>	Rabbit
<b>Species Reactivity</b>	Human, Mouse
<b>Tested Applications</b>	ELISA, WB, IHC; Recommended dilution: WB:1:1000-1:5000, IHC:1:20-1:200
<b>Form</b>	Liquid
<b>Conjugate</b>	Non-conjugated
<b>Storage Buffer</b>	PBS with 0.02% sodium azide, 50% glycerol, pH7.3.
<b>Purification Method</b>	Antigen Affinity Purified
<b>Isotype</b>	IgG
<b>Clonality</b>	Polyclonal
<b>Alias</b>	Methylcrotonoyl-CoA carboxylase beta chain, mitochondrial (MCCase subunit beta) (EC 6.4.1.4) (3-methylcrotonyl-CoA carboxylase 2) (3-methylcrotonyl-CoA carboxylase non-biotin-containing subunit) (3-methylcrotonyl-CoA:carbon dioxide ligase subunit beta), MCCC2, MCCB
<b>Immunogen Species</b>	Homo sapiens (Human)
<b>Research Area</b>	Signal Transduction
<b>Target Names</b>	MCCC2

## Image



### Western blot

All lanes: MCCC2 antibody at 6.85µg/ml

Lane 1: Mouse brain tissue

Lane 2: Hela whole cell lysate

Lane 3: MCF-7 whole cell lysate

Lane 4: K562 whole cell lysate

Lane 5: HepG2 whole cell lysate

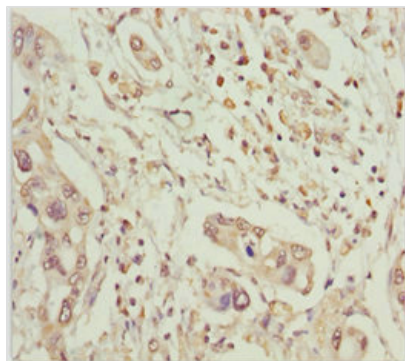
Lane 6: A549 whole cell lysate

Secondary

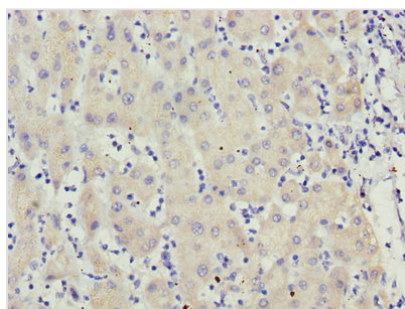
Goat polyclonal to rabbit IgG at 1/10000 dilution

Predicted band size: 62, 58 kDa

Observed band size: 62 kDa



Immunohistochemistry of paraffin-embedded human pancreatic cancer using CSB-PA867199ESR1HU at dilution of 1:100



Immunohistochemistry of paraffin-embedded human liver cancer using CSB-PA867199ESR1HU at dilution of 1:100