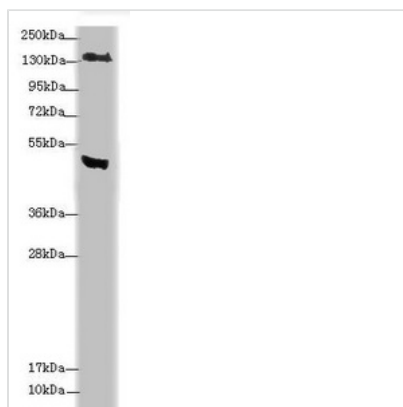




# MTUS1 Antibody

<b>Product Code</b>	CSB-PA892343DSR1HU
<b>Storage</b>	Upon receipt, store at -20°C or -80°C. Avoid repeated freeze.
<b>Uniprot No.</b>	Q9ULD2
<b>Immunogen</b>	Recombinant Human Microtubule-associated tumor suppressor 1 protein (1041-1270AA)
<b>Raised In</b>	Rabbit
<b>Species Reactivity</b>	Human
<b>Tested Applications</b>	ELISA, WB, IHC; Recommended dilution: WB:1:1000-1:5000, IHC:1:20-1:200
<b>Form</b>	Liquid
<b>Conjugate</b>	Non-conjugated
<b>Storage Buffer</b>	PBS with 0.02% sodium azide, 50% glycerol, pH7.3.
<b>Purification Method</b>	Antigen Affinity Purified
<b>Isotype</b>	IgG
<b>Clonality</b>	Polyclonal
<b>Alias</b>	Microtubule-associated tumor suppressor 1 (AT2 receptor-binding protein) (Angiotensin-II type 2 receptor-interacting protein) (Mitochondrial tumor suppressor 1), MTUS1, ATBP ATIP GK1 KIAA1288 MTSG1
<b>Immunogen Species</b>	Homo sapiens (Human)
<b>Research Area</b>	Epigenetics and Nuclear Signaling
<b>Target Names</b>	MTUS1

## Image



### Western blot

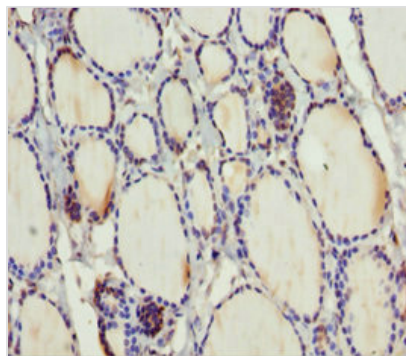
All lanes: MTUS1 antibody at 3.38 µg/ml + Jurkat whole cell lysate

### Secondary

Goat polyclonal to rabbit IgG at 1/10000 dilution

Predicted band size: 142, 136, 51, 40, 85, 59, 49 kDa

Observed band size: 142, 50 kDa



Immunohistochemistry of paraffin-embedded human thyroid tissue using CSB-PA892343DSR1HU at dilution of 1:100

## Usage

For Research Use Only. Not for use in diagnostic or therapeutic procedures.