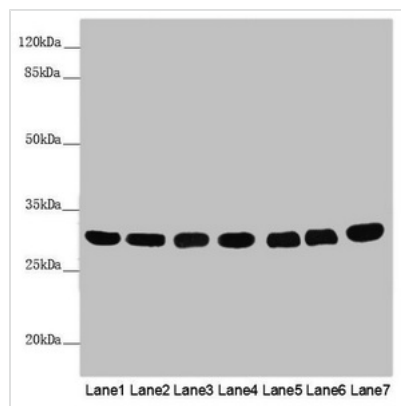




MTX2 Antibody

Product Code	CSB-PA015213ESR2HU
Storage	Upon receipt, store at -20°C or -80°C. Avoid repeated freeze.
Uniprot No.	O75431
Immunogen	Recombinant Human Metaxin-2 protein (1-263AA)
Raised In	Rabbit
Species Reactivity	Human, Mouse
Tested Applications	ELISA, WB, IHC, IF; Recommended dilution: WB:1:500-1:2000, IHC:1:20-1:200, IF:1:50-1:200
Form	Liquid
Conjugate	Non-conjugated
Storage Buffer	PBS with 0.02% sodium azide, 50% glycerol, pH7.3.
Purification Method	Antigen Affinity Purified
Isotype	IgG
Clonality	Polyclonal
Alias	Metaxin-2 (Mitochondrial outer membrane import complex protein 2), MTX2
Immunogen Species	Homo sapiens (Human)
Research Area	Others
Target Names	MTX2

Image



Western blot

All lanes: MTX2 antibody at 3.79 µg/ml

Lane 1: Mouse heart tissue

Lane 2: Mouse kidney tissue

Lane 3: Mouse liver tissue

Lane 4: Jurkat whole cell lysate

Lane 5: MCF-7 whole cell lysate

Lane 6: HepG2 whole cell lysate

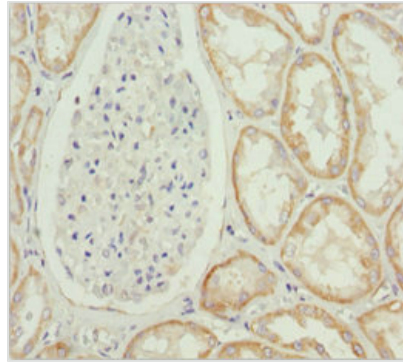
Lane 7: 293T whole cell lysate

Secondary

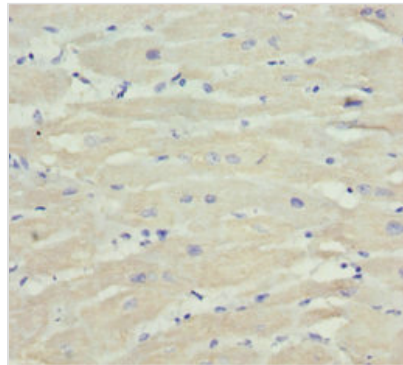
Goat polyclonal to rabbit IgG at 1/10000 dilution

Predicted band size: 30, 29 kDa

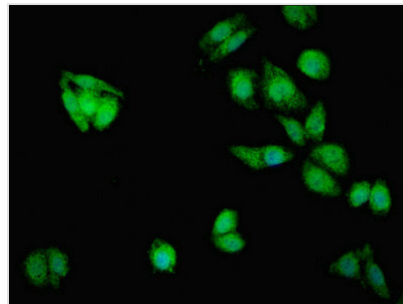
Observed band size: 30 kDa



Immunohistochemistry of paraffin-embedded human kidney tissue using CSB-PA015213ESR2HU at dilution of 1:100



Immunohistochemistry of paraffin-embedded human heart tissue using CSB-PA015213ESR2HU at dilution of 1:100



Immunofluorescent analysis of HepG2 cells using CSB-PA015213ESR2HU at dilution of 1:100 and Alexa Fluor 488-conjugated AffiniPure Goat Anti-Rabbit IgG(H+L)

Usage

For Research Use Only. Not for use in diagnostic or therapeutic procedures.