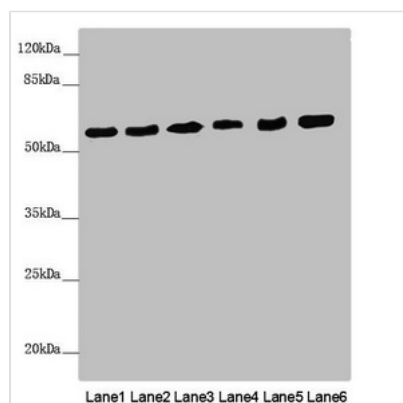




PACSIN2 Antibody

Product Code	CSB-PA890765ESR1HU
Storage	Upon receipt, store at -20°C or -80°C. Avoid repeated freeze.
Uniprot No.	Q9UNF0
Immunogen	Recombinant Human Protein kinase C and casein kinase substrate in neurons protein 2 protein (240-410AA)
Raised In	Rabbit
Species Reactivity	Human, Mouse
Tested Applications	ELISA, WB, IHC; Recommended dilution: WB:1:1000-1:5000, IHC:1:20-1:200
Form	Liquid
Conjugate	Non-conjugated
Storage Buffer	PBS with 0.02% sodium azide, 50% glycerol, pH7.3.
Purification Method	Antigen Affinity Purified
Isotype	IgG
Clonality	Polyclonal
Alias	Protein kinase C and casein kinase substrate in neurons protein 2 (Syndapin-2) (Syndapin-II), PACSIN2
Immunogen Species	Homo sapiens (Human)
Research Area	Signal Transduction
Target Names	PACSIN2

Image



Western blot

All lanes: PACSIN2 antibody at 2.62µg/ml

Lane 1: Mouse heart tissue

Lane 2: Mouse lung tissue

Lane 3: NIH/3T3 whole cell lysate

Lane 4: HeLa whole cell lysate

Lane 5: HL60 whole cell lysate

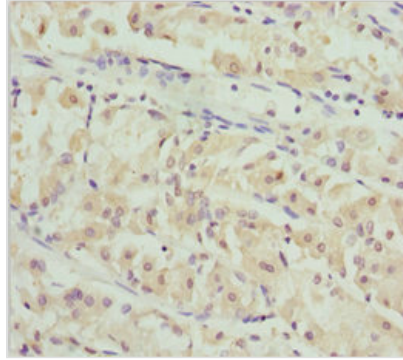
Lane 6: HepG2 whole cell lysate

Secondary

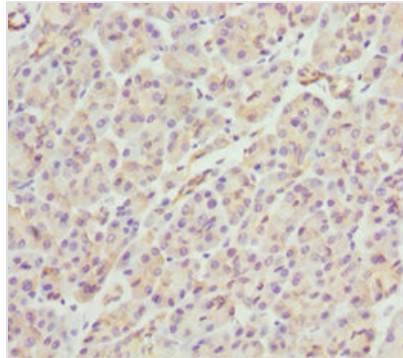
Goat polyclonal to rabbit IgG at 1/10000 dilution

Predicted band size: 56, 52 kDa

Observed band size: 56 kDa



Immunohistochemistry of paraffin-embedded human gastric cancer using CSB-PA890765ESR1HU at dilution of 1:100



Immunohistochemistry of paraffin-embedded human pancreatic tissue using CSB-PA890765ESR1HU at dilution of 1:100

Usage

For Research Use Only. Not for use in diagnostic or therapeutic procedures.