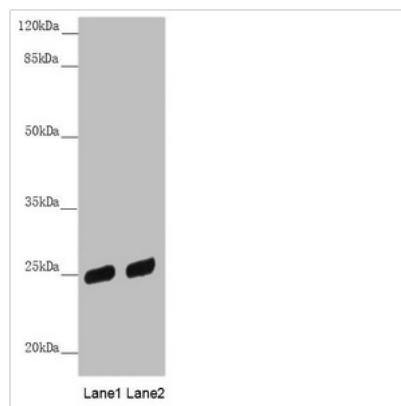




PSPH Antibody

Product Code	CSB-PA018938ESR1HU
Storage	Upon receipt, store at -20°C or -80°C. Avoid repeated freeze.
Uniprot No.	P78330
Immunogen	Recombinant Human Phosphoserine phosphatase protein (1-225AA)
Raised In	Rabbit
Species Reactivity	Human
Tested Applications	ELISA, WB, IHC; Recommended dilution: WB:1:1000-1:5000, IHC:1:20-1:200
Form	Liquid
Conjugate	Non-conjugated
Storage Buffer	PBS with 0.02% sodium azide, 50% glycerol, pH7.3.
Purification Method	Antigen Affinity Purified
Isotype	IgG
Clonality	Polyclonal
Alias	Phosphoserine phosphatase (PSP) (PSPase) (EC 3.1.3.3) (L-3-phosphoserine phosphatase) (O-phosphoserine phosphohydrolase), PSPH
Immunogen Species	Homo sapiens (Human)
Research Area	Signal Transduction
Target Names	PSPH

Image



Western blot

All lanes: PSPH antibody at 3.81µg/ml

Lane 1: HL60 whole cell lysate

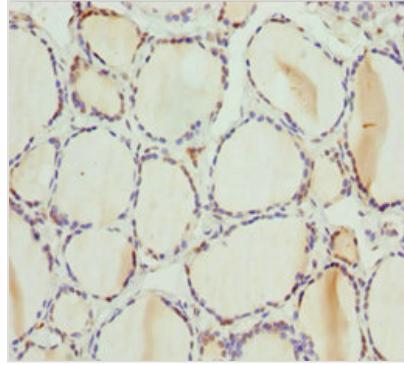
Lane 2: A431 whole cell lysate

Secondary

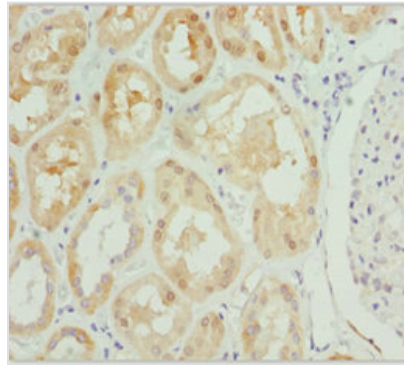
Goat polyclonal to rabbit IgG at 1/10000 dilution

Predicted band size: 25 kDa

Observed band size: 25 kDa



Immunohistochemistry of paraffin-embedded human thyroid tissue using CSB-PA018938ESR1HU at dilution of 1:100



Immunohistochemistry of paraffin-embedded human kidney tissue using CSB-PA018938ESR1HU at dilution of 1:100

Usage

For Research Use Only. Not for use in diagnostic or therapeutic procedures.