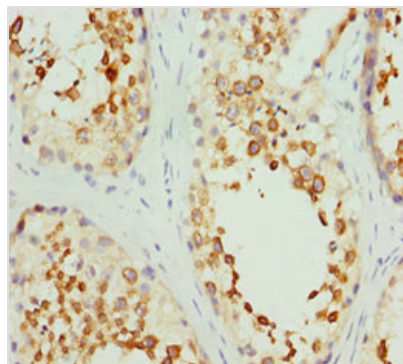




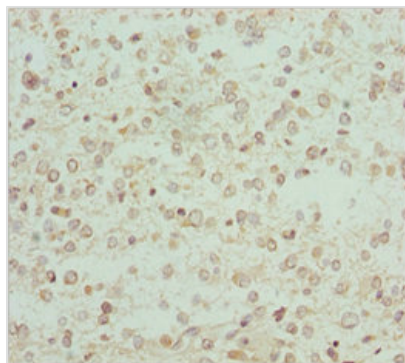
RCN2 Antibody

| | |
|----------------------------|--|
| Product Code | CSB-PA621768ESR1HU |
| Storage | Upon receipt, store at -20°C or -80°C. Avoid repeated freeze. |
| Uniprot No. | Q14257 |
| Immunogen | Recombinant Human Reticulocalbin-2 protein (23-180AA) |
| Raised In | Rabbit |
| Species Reactivity | Human |
| Tested Applications | ELISA, IHC; Recommended dilution: IHC:1:20-1:200 |
| Form | Liquid |
| Conjugate | Non-conjugated |
| Storage Buffer | PBS with 0.02% sodium azide, 50% glycerol, pH7.3. |
| Purification Method | Antigen Affinity Purified |
| Isotype | IgG |
| Clonality | Polyclonal |
| Alias | Reticulocalbin-2 (Calcium-binding protein ERC-55) (E6-binding protein) (E6BP), RCN2, ERC55 |
| Immunogen Species | Homo sapiens (Human) |
| Research Area | Signal Transduction |
| Target Names | RCN2 |

Image



Immunohistochemistry of paraffin-embedded human testis tissue using CSB-PA621768ESR1HU at dilution of 1:100



Immunohistochemistry of paraffin-embedded human glioma using CSB-PA621768ESR1HU at dilution of 1:100

Usage

For Research Use Only. Not for use in diagnostic or therapeutic procedures.