



REEP1 Antibody

Product Code	CSB-PA862045DSR1HU
Storage	Upon receipt, store at -20°C or -80°C. Avoid repeated freeze.
Uniprot No.	Q9H902
Immunogen	Recombinant Human Receptor expression-enhancing protein 1 protein (101-201AA)
Raised In	Rabbit
Species Reactivity	Human, Mouse
Tested Applications	ELISA, WB, IHC; Recommended dilution: WB:1:1000-1:5000, IHC:1:20-1:200
Form	Liquid
Conjugate	Non-conjugated
Storage Buffer	PBS with 0.02% sodium azide, 50% glycerol, pH7.3.
Purification Method	Antigen Affinity Purified
Isotype	IgG
Clonality	Polyclonal
Alias	Receptor expression-enhancing protein 1 (Spastic paraplegia 31 protein), REEP1, C2orf23 SPG31
Immunogen Species	Homo sapiens (Human)
Research Area	Neuroscience
Target Names	REEP1

Image



Western blot

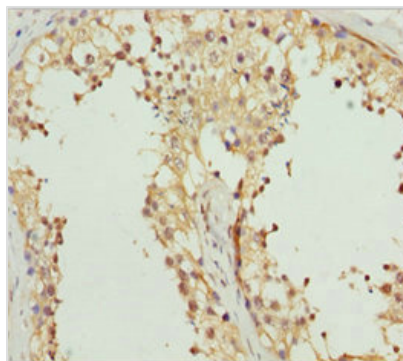
All lanes: REEP1 antibody at 5.84 µg/ml +
Mouse gonadal tissue

Secondary

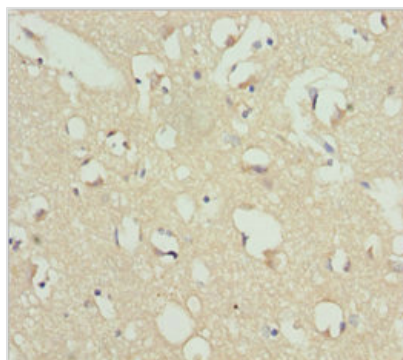
Goat polyclonal to rabbit IgG at 1/10000 dilution

Predicted band size: 23, 19, 17 kDa

Observed band size: 23, 80 kDa



Immunohistochemistry of paraffin-embedded human testis tissue using CSB-PA862045DSR1HU at dilution of 1:100



Immunohistochemistry of paraffin-embedded human brain tissue using CSB-PA862045DSR1HU at dilution of 1:100