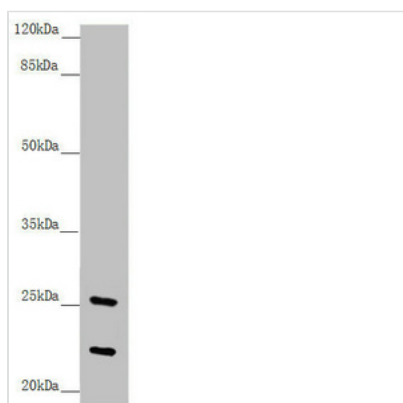




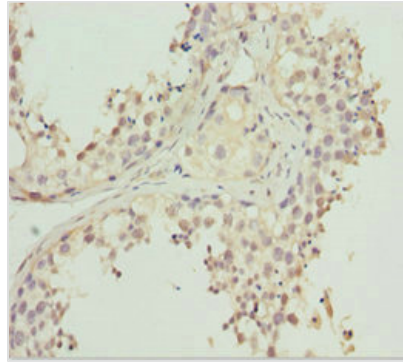
REEP1 Antibody

| | |
|----------------------------|---|
| Product Code | CSB-PA862045DSR2HU |
| Storage | Upon receipt, store at -20°C or -80°C. Avoid repeated freeze. |
| Uniprot No. | Q9H902 |
| Immunogen | Recombinant Human Receptor expression-enhancing protein 1 protein (101-201AA) |
| Raised In | Rabbit |
| Species Reactivity | Human, Mouse |
| Tested Applications | ELISA, WB, IHC; Recommended dilution: WB:1:1000-1:5000, IHC:1:20-1:200 |
| Form | Liquid |
| Conjugate | Non-conjugated |
| Storage Buffer | PBS with 0.02% sodium azide, 50% glycerol, pH7.3. |
| Purification Method | Antigen Affinity Purified |
| Isotype | IgG |
| Clonality | Polyclonal |
| Alias | Receptor expression-enhancing protein 1 (Spastic paraplegia 31 protein), REEP1, C2orf23 SPG31 |
| Immunogen Species | Homo sapiens (Human) |
| Research Area | Neuroscience |
| Target Names | REEP1 |

Image



Western blot
 All lanes: REEP1 antibody at 7.6 µg/ml + Mouse gonadal tissue
 Secondary
 Goat polyclonal to rabbit IgG at 1/10000 dilution
 Predicted band size: 23, 19, 17 kDa
 Observed band size: 23, 26 kDa



Immunohistochemistry of paraffin-embedded human testis tissue using CSB-PA862045DSR2HU at dilution of 1:100

Usage

For Research Use Only. Not for use in diagnostic or therapeutic procedures.