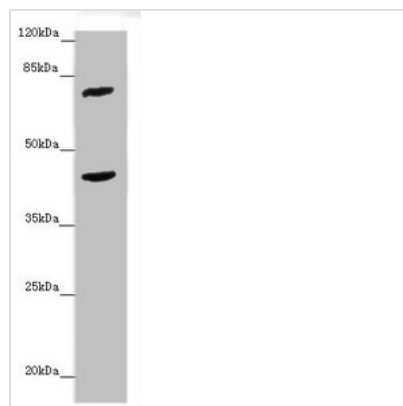




# ACSL6 Antibody

<b>Product Code</b>	CSB-PA892139ESR1HU
<b>Storage</b>	Upon receipt, store at -20°C or -80°C. Avoid repeated freeze.
<b>Uniprot No.</b>	Q9UKU0
<b>Immunogen</b>	Recombinant Human Long-chain-fatty-acid--CoA ligase 6 protein (458-697AA)
<b>Raised In</b>	Rabbit
<b>Species Reactivity</b>	Human, Mouse
<b>Tested Applications</b>	ELISA, WB, IHC; Recommended dilution: WB:1:1000-1:5000, IHC:1:20-1:200
<b>Form</b>	Liquid
<b>Conjugate</b>	Non-conjugated
<b>Storage Buffer</b>	PBS with 0.02% sodium azide, 50% glycerol, pH7.3.
<b>Purification Method</b>	Antigen Affinity Purified
<b>Isotype</b>	IgG
<b>Clonality</b>	Polyclonal
<b>Alias</b>	Long-chain-fatty-acid--CoA ligase 6 (EC 6.2.1.3) (Long-chain acyl-CoA synthetase 6) (LACS 6), ACSL6, ACS2, FACL6, KIAA0837, LACS5
<b>Immunogen Species</b>	Homo sapiens (Human)
<b>Research Area</b>	Signal Transduction
<b>Target Names</b>	ACSL6

## Image

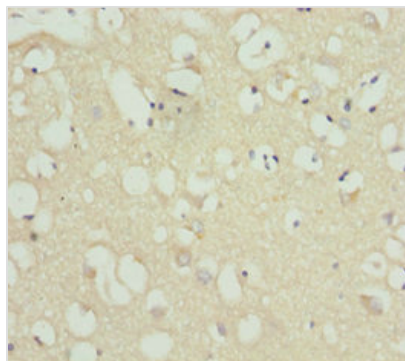


### Western blot

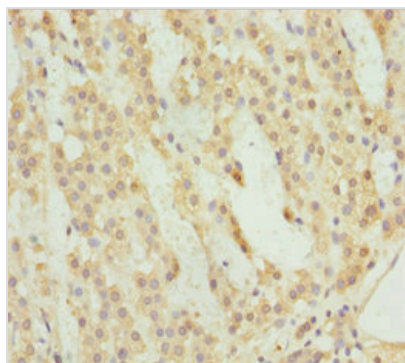
All lanes: ACSL6 antibody at 4.25 µg/ml +  
Mouse liver tissue

### Secondary

Goat polyclonal to rabbit IgG at 1/10000 dilution  
Predicted band size: 78, 81, 75, 77, 80, 70 kDa  
Observed band size: 78, 42 kDa



Immunohistochemistry of paraffin-embedded human brain tissue using CSB-PA892139ESR1HU at dilution of 1:100



Immunohistochemistry of paraffin-embedded human adrenal gland tissue using CSB-PA892139ESR1HU at dilution of 1:100

## Usage

For Research Use Only. Not for use in diagnostic or therapeutic procedures.