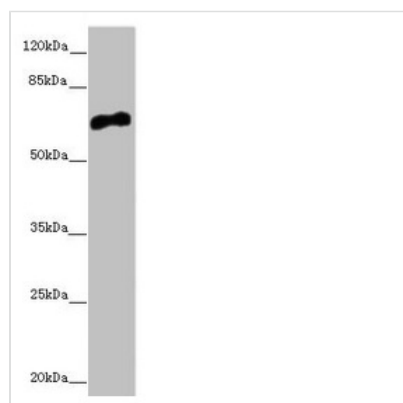




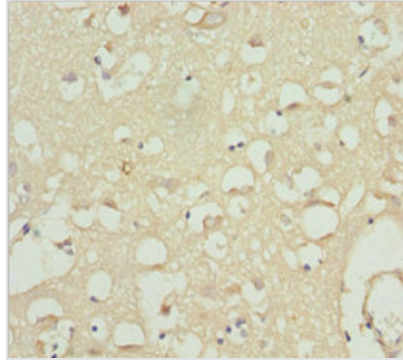
CACNB1 Antibody

Product Code	CSB-PA004411DSR1HU
Storage	Upon receipt, store at -20°C or -80°C. Avoid repeated freeze.
Uniprot No.	Q02641
Immunogen	Recombinant Human Voltage-dependent L-type calcium channel subunit beta-1 protein (429-598AA)
Raised In	Rabbit
Species Reactivity	Human
Tested Applications	ELISA, WB, IHC; Recommended dilution: WB:1:1000-1:5000, IHC:1:20-1:200
Form	Liquid
Conjugate	Non-conjugated
Storage Buffer	PBS with 0.02% sodium azide, 50% glycerol, pH7.3.
Purification Method	Antigen Affinity Purified
Isotype	IgG
Clonality	Polyclonal
Alias	Voltage-dependent L-type calcium channel subunit beta-1 (CAB1) (Calcium channel voltage-dependent subunit beta 1), CACNB1, CACNLB1
Immunogen Species	Homo sapiens (Human)
Research Area	Others
Target Names	CACNB1

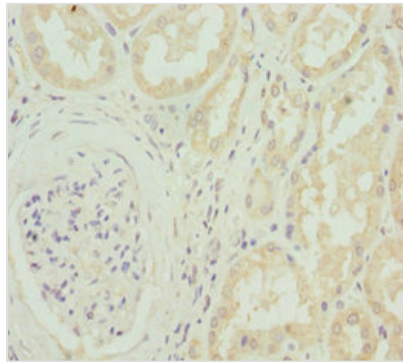
Image



Western blot
 All lanes: CACNB1 antibody at 6.68µg/ml +
 HepG2 whole cell lysate
 Secondary
 Goat polyclonal to rabbit IgG at 1/10000 dilution
 Predicted band size: 66, 58, 54 kDa
 Observed band size: 66 kDa



Immunohistochemistry of paraffin-embedded human brain tissue using CSB-PA004411DSR1HU at dilution of 1:100



Immunohistochemistry of paraffin-embedded human kidney tissue using CSB-PA004411DSR1HU at dilution of 1:100

Usage

For Research Use Only. Not for use in diagnostic or therapeutic procedures.