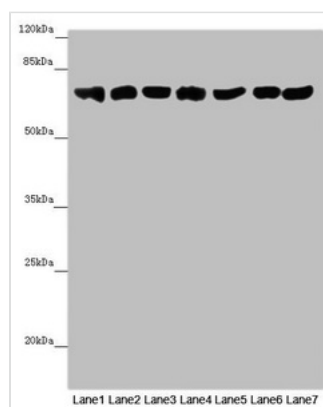




EFHC1 Antibody

Product Code	CSB-PA708490ESR1HU
Storage	Upon receipt, store at -20°C or -80°C. Avoid repeated freeze.
Uniprot No.	Q5JVL4
Immunogen	Recombinant Human EF-hand domain-containing protein 1 protein (391-640AA)
Raised In	Rabbit
Species Reactivity	Human, Mouse
Tested Applications	ELISA, WB, IHC; Recommended dilution: WB:1:1000-1:5000, IHC:1:20-1:200
Form	Liquid
Conjugate	Non-conjugated
Storage Buffer	PBS with 0.02% sodium azide, 50% glycerol, pH7.3.
Purification Method	Antigen Affinity Purified
Isotype	IgG
Clonality	Polyclonal
Alias	EF-hand domain-containing protein 1 (Myoclonin-1), EFHC1
Immunogen Species	Homo sapiens (Human)
Research Area	Neuroscience
Target Names	EFHC1

Image



Western blot

All lanes: EFHC1 antibody at 9.9 µg/ml

Lane 1: Mouse large intestine tissue

Lane 2: Mouse stomach tissue

Lane 3: Mouse brain tissue

Lane 4: Mouse kidney tissue

Lane 5: Mouse gonadal tissue

Lane 6: HeLa whole cell lysate

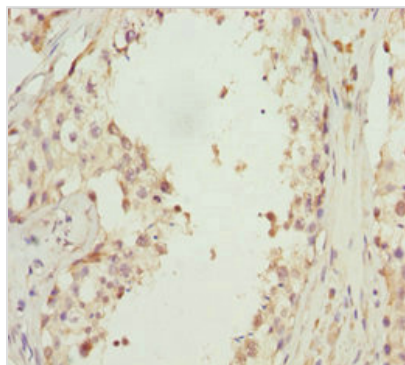
Lane 7: 293T whole cell lysate

Secondary

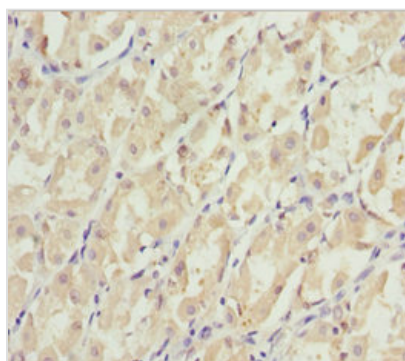
Goat polyclonal to rabbit IgG at 1/10000 dilution

Predicted band size: 74, 32, 73 kDa

Observed band size: 74 kDa



Immunohistochemistry of paraffin-embedded human testis tissue using CSB-PA708490ESR1HU at dilution of 1:100



Immunohistochemistry of paraffin-embedded human gastric cancer using CSB-PA708490ESR1HU at dilution of 1:100