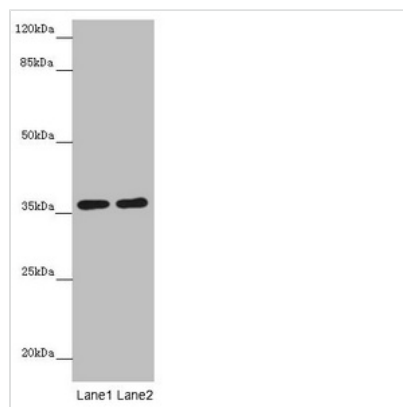




# GNB1L Antibody

<b>Product Code</b>	CSB-PA866315ESR2HU
<b>Storage</b>	Upon receipt, store at -20°C or -80°C. Avoid repeated freeze.
<b>Uniprot No.</b>	Q9BYB4
<b>Immunogen</b>	Recombinant Human Guanine nucleotide-binding protein subunit beta-like protein 1 protein (1-327AA)
<b>Raised In</b>	Rabbit
<b>Species Reactivity</b>	Human, Mouse
<b>Tested Applications</b>	ELISA, WB, IHC; Recommended dilution: WB:1:1000-1:5000, IHC:1:20-1:200
<b>Form</b>	Liquid
<b>Conjugate</b>	Non-conjugated
<b>Storage Buffer</b>	PBS with 0.02% sodium azide, 50% glycerol, pH7.3.
<b>Purification Method</b>	Antigen Affinity Purified
<b>Isotype</b>	IgG
<b>Clonality</b>	Polyclonal
<b>Alias</b>	Guanine nucleotide-binding protein subunit beta-like protein 1 (G protein subunit beta-like protein 1) (DGCRK3) (WD repeat-containing protein 14) (WD40 repeat-containing protein deleted in VCFS) (WDVCF), GNB1L, GY2 KIAA1645 WDR14
<b>Immunogen Species</b>	Homo sapiens (Human)
<b>Research Area</b>	Signal Transduction
<b>Target Names</b>	GNB1L

## Image



### Western blot

All lanes: GNB1L antibody at 3.69µg/ml

Lane 1: Mouse brain tissue

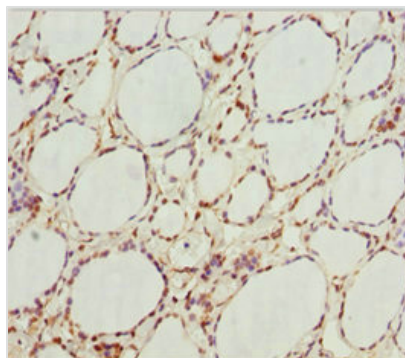
Lane 2: Jurkat whole cell lysate

Secondary

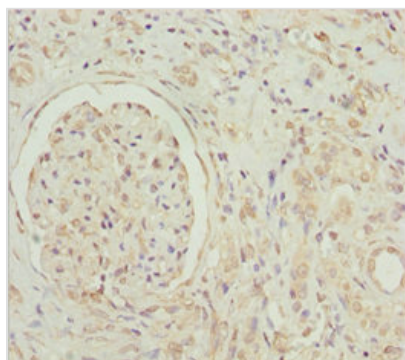
Goat polyclonal to rabbit IgG at 1/10000 dilution

Predicted band size: 36, 23 kDa

Observed band size: 36 kDa



Immunohistochemistry of paraffin-embedded human thyroid tissue using CSB-PA866315ESR2HU at dilution of 1:100



Immunohistochemistry of paraffin-embedded human kidney tissue using CSB-PA866315ESR2HU at dilution of 1:100

## Usage

For Research Use Only. Not for use in diagnostic or therapeutic procedures.