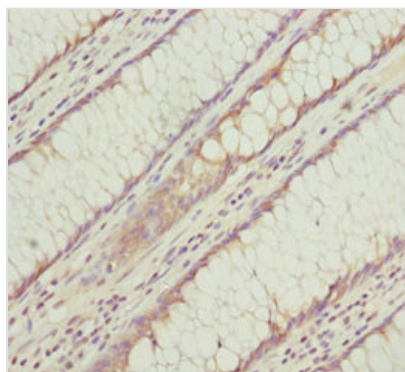




KLHL7 Antibody

| | |
|----------------------------|---|
| Product Code | CSB-PA812891ESR1HU |
| Storage | Upon receipt, store at -20°C or -80°C. Avoid repeated freeze. |
| Uniprot No. | Q8IXQ5 |
| Immunogen | Recombinant Human Kelch-like protein 7 protein (427-586AA) |
| Raised In | Rabbit |
| Species Reactivity | Human |
| Tested Applications | ELISA, IHC; Recommended dilution: IHC:1:20-1:200 |
| Form | Liquid |
| Conjugate | Non-conjugated |
| Storage Buffer | PBS with 0.02% sodium azide, 50% glycerol, pH7.3. |
| Purification Method | Antigen Affinity Purified |
| Isotype | IgG |
| Clonality | Polyclonal |
| Alias | Kelch-like protein 7, KLHL7 |
| Immunogen Species | Homo sapiens (Human) |
| Research Area | Others |
| Target Names | KLHL7 |

Image



Immunohistochemistry of paraffin-embedded human colon cancer using CSB-PA812891ESR1HU at dilution of 1:100

Usage

For Research Use Only. Not for use in diagnostic or therapeutic procedures.