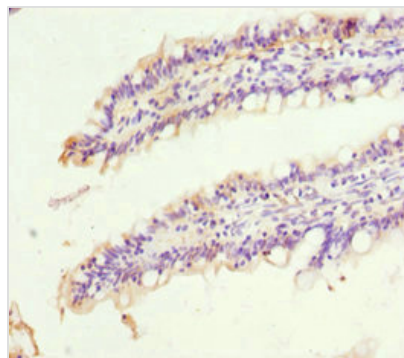




SIGLEC12 Antibody

Product Code	CSB-PA836278ESR1HU
Storage	Upon receipt, store at -20°C or -80°C. Avoid repeated freeze.
Uniprot No.	Q96PQ1
Immunogen	Recombinant Human Sialic acid-binding Ig-like lectin 12 protein (20-210AA)
Raised In	Rabbit
Species Reactivity	Human
Tested Applications	ELISA, IHC; Recommended dilution: IHC:1:20-1:200
Form	Liquid
Conjugate	Non-conjugated
Storage Buffer	PBS with 0.02% sodium azide, 50% glycerol, pH7.3.
Purification Method	Antigen Affinity Purified
Isotype	IgG
Clonality	Polyclonal
Alias	Sialic acid-binding Ig-like lectin 12 (Siglec-12) (Sialic acid-binding Ig-like lectin-like 1) (Siglec-L1), SIGLEC12, SIGLECL1 SLG
Immunogen Species	Homo sapiens (Human)
Research Area	Immunology
Target Names	SIGLEC12

Image



Immunohistochemistry of paraffin-embedded human small intestine tissue using CSB-PA836278ESR1HU at dilution of 1:100

Usage

For Research Use Only. Not for use in diagnostic or therapeutic procedures.