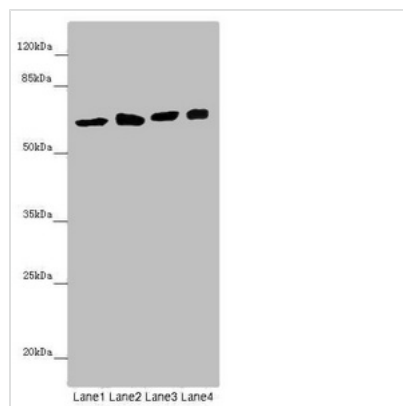




# SOCS4 Antibody

<b>Product Code</b>	CSB-PA022393ESR1HU
<b>Storage</b>	Upon receipt, store at -20°C or -80°C. Avoid repeated freeze.
<b>Uniprot No.</b>	Q8WXH5
<b>Immunogen</b>	Recombinant Human Suppressor of cytokine signaling 4 protein (1-270AA)
<b>Raised In</b>	Rabbit
<b>Species Reactivity</b>	Human, Mouse
<b>Tested Applications</b>	ELISA, WB, IHC; Recommended dilution: WB:1:1000-1:5000, IHC:1:20-1:200
<b>Form</b>	Liquid
<b>Conjugate</b>	Non-conjugated
<b>Storage Buffer</b>	PBS with 0.02% sodium azide, 50% glycerol, pH7.3.
<b>Purification Method</b>	Antigen Affinity Purified
<b>Isotype</b>	IgG
<b>Clonality</b>	Polyclonal
<b>Alias</b>	Suppressor of cytokine signaling 4 (SOCS-4) (Suppressor of cytokine signaling 7) (SOCS-7), SOCS4, SOCS7
<b>Immunogen Species</b>	Homo sapiens (Human)
<b>Research Area</b>	Signal Transduction
<b>Target Names</b>	SOCS4

## Image



### Western blot

All lanes: SOCS4 antibody at 4.39 µg/ml

Lane 1: Mouse kidney tissue

Lane 2: Jurkat whole cell lysate

Lane 3: A549 whole cell lysate

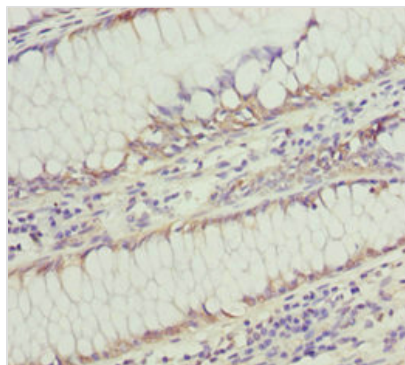
Lane 4: 293T whole cell lysate

Secondary

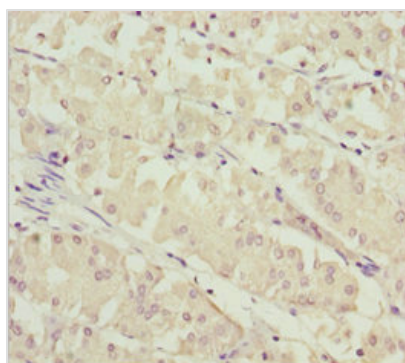
Goat polyclonal to rabbit IgG at 1/10000 dilution

Predicted band size: 60 kDa

Observed band size: 60 kDa



Immunohistochemistry of paraffin-embedded human colon cancer using CSB-PA022393ESR1HU at dilution of 1:100



Immunohistochemistry of paraffin-embedded human gastric cancer using CSB-PA022393ESR1HU at dilution of 1:100

## Usage

For Research Use Only. Not for use in diagnostic or therapeutic procedures.