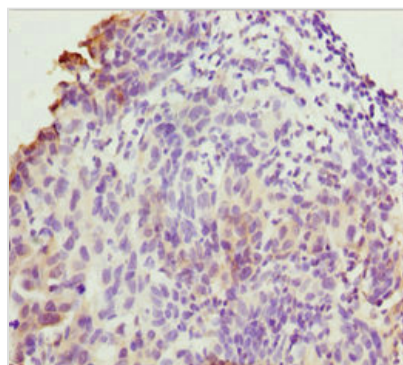




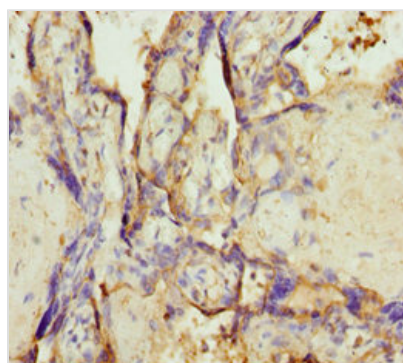
TMEM43 Antibody

Product Code	CSB-PA023840ESR1HU
Storage	Upon receipt, store at -20°C or -80°C. Avoid repeated freeze.
Uniprot No.	Q9BTV4
Immunogen	Recombinant Human Transmembrane protein 43 protein (80-310AA)
Raised In	Rabbit
Species Reactivity	Human
Tested Applications	ELISA, IHC; Recommended dilution: IHC:1:20-1:200
Form	Liquid
Conjugate	Non-conjugated
Storage Buffer	PBS with 0.02% sodium azide, 50% glycerol, pH7.3.
Purification Method	Antigen Affinity Purified
Isotype	IgG
Clonality	Polyclonal
Alias	Transmembrane protein 43 (Protein LUMA), TMEM43
Immunogen Species	Homo sapiens (Human)
Research Area	Tags & Cell Markers
Target Names	TMEM43

Image



Immunohistochemistry of paraffin-embedded human bladder cancer using CSB-PA023840ESR1HU at dilution of 1:100



Immunohistochemistry of paraffin-embedded human placenta tissue using CSB-PA023840ESR1HU at dilution of 1:100



Usage

For Research Use Only. Not for use in diagnostic or therapeutic procedures.