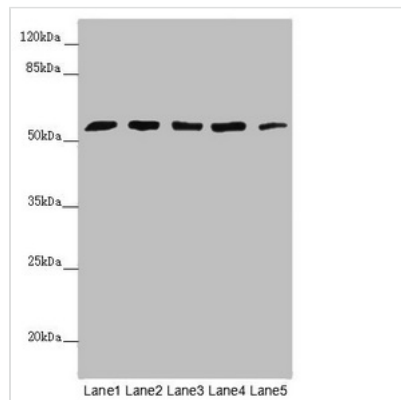




CEP57L1 Antibody

Product Code	CSB-PA818266ESR1HU
Storage	Upon receipt, store at -20°C or -80°C. Avoid repeated freeze.
Uniprot No.	Q8IYX8
Immunogen	Recombinant Human Centrosomal protein CEP57L1 protein (1-167AA)
Raised In	Rabbit
Species Reactivity	Human
Tested Applications	ELISA, WB, IHC; Recommended dilution: WB:1:1000-1:5000, IHC:1:20-1:200
Form	Liquid
Conjugate	Non-conjugated
Storage Buffer	PBS with 0.02% sodium azide, 50% glycerol, pH7.3.
Purification Method	Antigen Affinity Purified
Isotype	IgG
Clonality	Polyclonal
Alias	Centrosomal protein CEP57L1 (Centrosomal protein 57kDa-like protein 1) (Centrosomal protein of 57 kDa-related protein) (Cep57R) (Cep57-related protein), CEP57L1, C6orf182 CEP57R
Immunogen Species	Homo sapiens (Human)
Research Area	Tags & Cell Markers
Target Names	CEP57L1

Image



Western blot

All lanes: CEP57L1 antibody at 6.26µg/ml

Lane 1: CEM whole cell lysate

Lane 2: 293T whole cell lysate

Lane 3: Hela whole cell lysate

Lane 4: Jurkat whole cell lysate

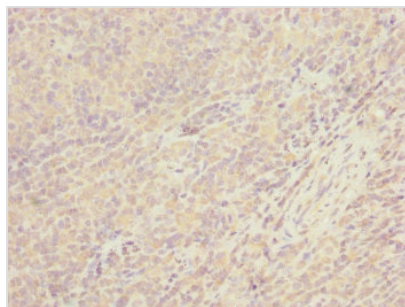
Lane 5: A549 whole cell lysate

Secondary

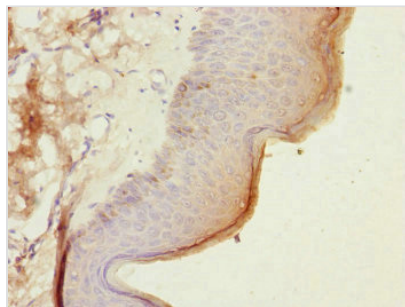
Goat polyclonal to rabbit IgG at 1/10000 dilution

Predicted band size: 54, 46 kDa

Observed band size: 54 kDa



Immunohistochemistry of paraffin-embedded human tonsil tissue using CSB-PA818266ESR1HU at dilution of 1:100



Immunohistochemistry of paraffin-embedded human skin tissue using CSB-PA818266ESR1HU at dilution of 1:100

Usage

For Research Use Only. Not for use in diagnostic or therapeutic procedures.