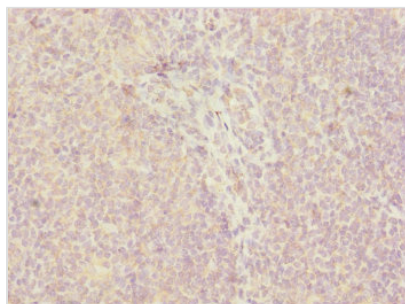




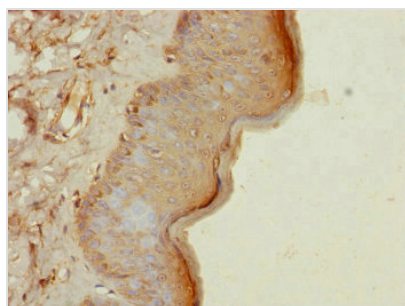
CEP57L1 Antibody

Product Code	CSB-PA818266ESR2HU
Storage	Upon receipt, store at -20°C or -80°C. Avoid repeated freeze.
Uniprot No.	Q8IYX8
Immunogen	Recombinant Human Centrosomal protein CEP57L1 protein (1-167AA)
Raised In	Rabbit
Species Reactivity	Human
Tested Applications	ELISA, IHC; Recommended dilution: IHC:1:20-1:200
Form	Liquid
Conjugate	Non-conjugated
Storage Buffer	PBS with 0.02% sodium azide, 50% glycerol, pH7.3.
Purification Method	Antigen Affinity Purified
Isotype	IgG
Clonality	Polyclonal
Alias	Centrosomal protein CEP57L1 (Centrosomal protein 57kDa-like protein 1) (Centrosomal protein of 57 kDa-related protein) (Cep57R) (Cep57-related protein), CEP57L1, C6orf182 CEP57R
Immunogen Species	Homo sapiens (Human)
Research Area	Tags & Cell Markers
Target Names	CEP57L1

Image



Immunohistochemistry of paraffin-embedded human tonsil tissue using CSB-PA818266ESR2HU at dilution of 1:100



Immunohistochemistry of paraffin-embedded human skin tissue using CSB-PA818266ESR2HU at dilution of 1:100



Usage

For Research Use Only. Not for use in diagnostic or therapeutic procedures.