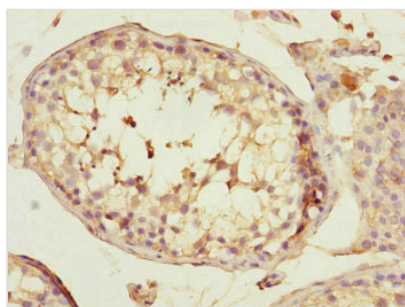




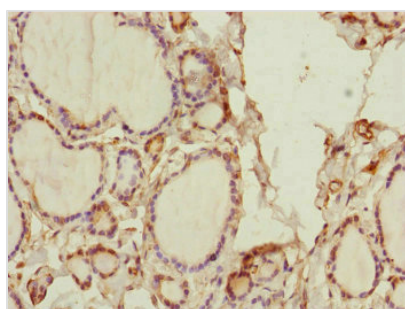
SPICE1 Antibody

Product Code	CSB-PA854012ESR1HU
Storage	Upon receipt, store at -20°C or -80°C. Avoid repeated freeze.
Uniprot No.	Q8N0Z3
Immunogen	Recombinant Human Spindle and centriole-associated protein 1 protein (1-220AA)
Raised In	Rabbit
Species Reactivity	Human
Tested Applications	ELISA, IHC; Recommended dilution: IHC:1:20-1:200
Form	Liquid
Conjugate	Non-conjugated
Storage Buffer	PBS with 0.02% sodium azide, 50% glycerol, pH7.3.
Purification Method	Antigen Affinity Purified
Isotype	IgG
Clonality	Polyclonal
Alias	Spindle and centriole-associated protein 1 (Coiled-coil domain-containing protein 52) (Spindle and centriole-associated protein), SPICE1, CCDC52 SPICE
Immunogen Species	Homo sapiens (Human)
Research Area	Cell Biology
Target Names	SPICE1

Image



Immunohistochemistry of paraffin-embedded human testis tissue using CSB-PA854012ESR1HU at dilution of 1:100



Immunohistochemistry of paraffin-embedded human thyroid tissue using CSB-PA854012ESR1HU at dilution of 1:100



Usage

For Research Use Only. Not for use in diagnostic or therapeutic procedures.