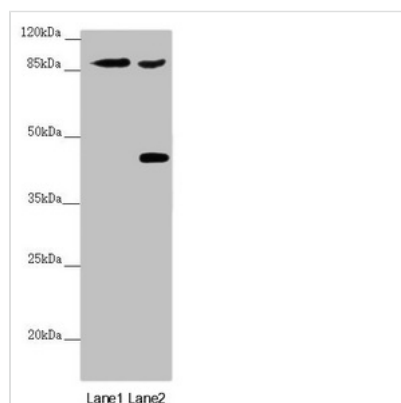




SPICE1 Antibody

Product Code	CSB-PA854012ESR2HU
Storage	Upon receipt, store at -20°C or -80°C. Avoid repeated freeze.
Uniprot No.	Q8N0Z3
Immunogen	Recombinant Human Spindle and centriole-associated protein 1 protein (1-220AA)
Raised In	Rabbit
Species Reactivity	Human, Mouse
Tested Applications	ELISA, WB, IHC; Recommended dilution: WB:1:1000-1:5000, IHC:1:20-1:200
Form	Liquid
Conjugate	Non-conjugated
Storage Buffer	PBS with 0.02% sodium azide, 50% glycerol, pH7.3.
Purification Method	Antigen Affinity Purified
Isotype	IgG
Clonality	Polyclonal
Alias	Spindle and centriole-associated protein 1 (Coiled-coil domain-containing protein 52) (Spindle and centriole-associated protein), SPICE1, CCDC52 SPICE
Immunogen Species	Homo sapiens (Human)
Research Area	Cell Biology
Target Names	SPICE1

Image



Western blot

All lanes: SPICE1 antibody at 5.43 µg/ml

Lane 1: Mouse gonadal tissue

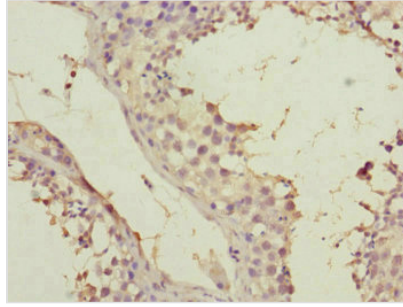
Lane 2: 293T whole cell lysate

Secondary

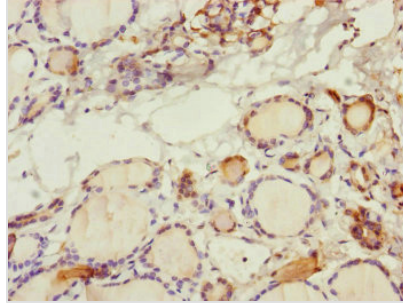
Goat polyclonal to rabbit IgG at 1/10000 dilution

Predicted band size: 96 kDa

Observed band size: 96, 45 kDa



Immunohistochemistry of paraffin-embedded human testis tissue using CSB-PA854012ESR2HU at dilution of 1:100



Immunohistochemistry of paraffin-embedded human thyroid tissue using CSB-PA854012ESR2HU at dilution of 1:100

Usage

For Research Use Only. Not for use in diagnostic or therapeutic procedures.