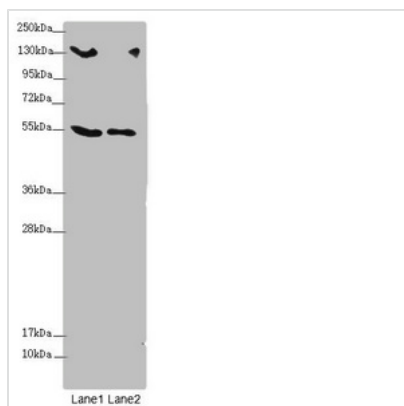




CSPP1 Antibody

Product Code	CSB-PA635936DSR2HU
Storage	Upon receipt, store at -20°C or -80°C. Avoid repeated freeze.
Uniprot No.	Q1MSJ5
Immunogen	Recombinant Human Centrosome and spindle pole-associated protein 1 protein (997-1256AA)
Raised In	Rabbit
Species Reactivity	Human
Tested Applications	ELISA, WB, IHC; Recommended dilution: WB:1:1000-1:5000, IHC:1:20-1:200
Form	Liquid
Conjugate	Non-conjugated
Storage Buffer	PBS with 0.02% sodium azide, 50% glycerol, pH7.3.
Purification Method	Antigen Affinity Purified
Isotype	IgG
Clonality	Polyclonal
Alias	Centrosome and spindle pole-associated protein 1, CSPP1, CSPP
Immunogen Species	Homo sapiens (Human)
Research Area	Cell Biology
Target Names	CSPP1

Image



Western blot

All lanes: CSPP1 antibody at 1.53 µg/ml

Lane 1: 293T whole cell lysate

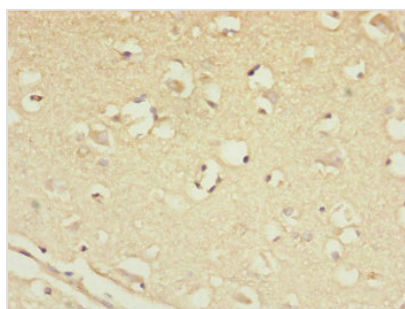
Lane 2: Jurkat whole cell lysate

Secondary

Goat polyclonal to rabbit IgG at 1/10000 dilution

Predicted band size: 146, 142, 102 kDa

Observed band size: 146, 75, 55 kDa



Immunohistochemistry of paraffin-embedded

human brain tissue using CSB-

PA635936DSR2HU at dilution of 1:100



Usage

For Research Use Only. Not for use in diagnostic or therapeutic procedures.