



EIF3M Antibody

Product Code	CSB-PA745333DSR1HU
Storage	Upon receipt, store at -20°C or -80°C. Avoid repeated freeze.
Uniprot No.	Q7L2H7
Immunogen	Recombinant Human Eukaryotic translation initiation factor 3 subunit M protein (1-374AA)
Raised In	Rabbit
Species Reactivity	Human, Mouse
Tested Applications	ELISA, WB, IHC, IP; Recommended dilution: WB:1:1000-1:5000, IHC:1:20-1:200, IP:1:200-1:2000
Form	Liquid
Conjugate	Non-conjugated
Storage Buffer	PBS with 0.02% sodium azide, 50% glycerol, pH7.3.
Purification Method	Antigen Affinity Purified
Isotype	IgG
Clonality	Polyclonal
Alias	Eukaryotic translation initiation factor 3 subunit M (eIF3m) (Fetal lung protein B5) (hFL-B5) (PCI domain-containing protein 1), EIF3M, HFLB5 PCID1
Immunogen Species	Homo sapiens (Human)
Research Area	Microbiology
Target Names	EIF3M

Image



Western blot

All lanes: EIF3M antibody at 2.02μg/ml

Lane 1: Hela whole cell lysate

Lane 2: A549 whole cell lysate

Lane 3: Mouse gonadal tissue

Lane 4: Human placenta tissue

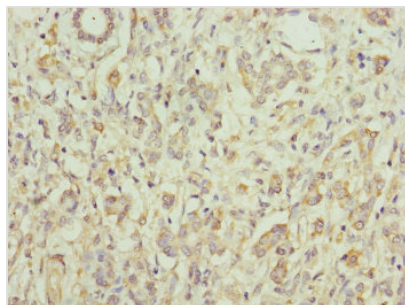
Lane 5: Mouse brain tissue

Secondary

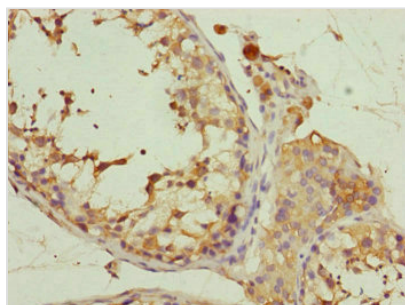
Goat polyclonal to rabbit IgG at 1/10000 dilution

Predicted band size: 43, 28 kDa

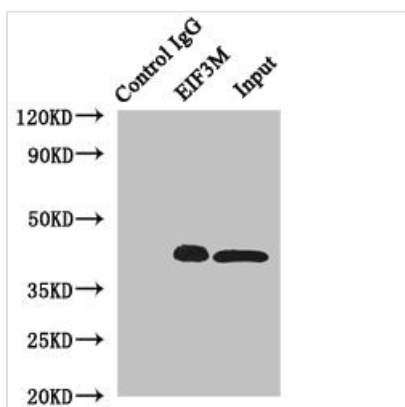
Observed band size: 43 kDa



Immunohistochemistry of paraffin-embedded human pancreatic cancer using CSB-PA745333DSR1HU at dilution of 1:100



Immunohistochemistry of paraffin-embedded human testis tissue using CSB-PA745333DSR1HU at dilution of 1:100



Immunoprecipitating EIF3M in HeLa whole cell lysate
 Lane 1: Rabbit control IgG instead of (1μg) instead of CSB-PA745333DSR1HU in HeLa whole cell lysate. For western blotting, a HRP-conjugated light chain specific antibody was used as the Secondary antibody (1/50000)
 Lane 2: CSB-PA745333DSR1HU (4μg) + HeLa whole cell lysate (500μg)
 Lane 3: HeLa whole cell lysate (20μg)