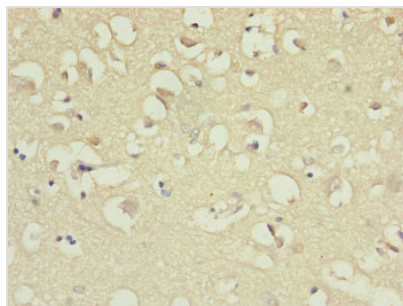




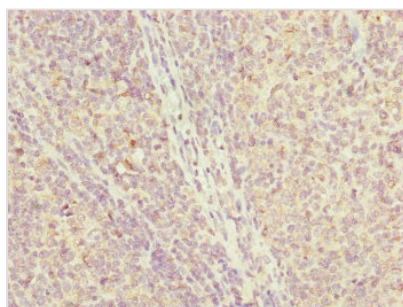
IL36A Antibody

Product Code	CSB-PA887028ESR2HU
Storage	Upon receipt, store at -20°C or -80°C. Avoid repeated freeze.
Uniprot No.	Q9UHA7
Immunogen	Recombinant Human Interleukin-36 alpha protein (1-158AA)
Raised In	Rabbit
Species Reactivity	Human
Tested Applications	ELISA, IHC; Recommended dilution: IHC:1:20-1:200
Form	Liquid
Conjugate	Non-conjugated
Storage Buffer	PBS with 0.02% sodium azide, 50% glycerol, pH7.3.
Purification Method	Antigen Affinity Purified
Isotype	IgG
Clonality	Polyclonal
Alias	Interleukin-36 alpha (FIL1 epsilon) (Interleukin-1 epsilon) (IL-1 epsilon) (Interleukin-1 family member 6) (IL-1F6), IL36A, FIL1E IL1E IL1F6
Immunogen Species	Homo sapiens (Human)
Research Area	Immunology
Target Names	IL36A

Image



Immunohistochemistry of paraffin-embedded human brain tissue using CSB-PA887028ESR2HU at dilution of 1:100



Immunohistochemistry of paraffin-embedded human tonsil tissue using CSB-PA887028ESR2HU at dilution of 1:100