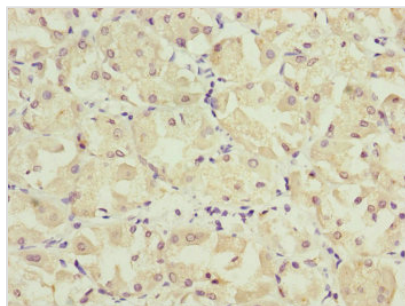




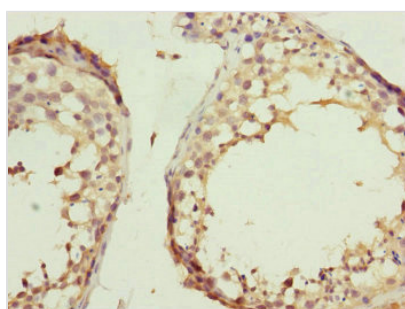
KANSL3 Antibody

Product Code	CSB-PA882183ESR1HU
Storage	Upon receipt, store at -20°C or -80°C. Avoid repeated freeze.
Uniprot No.	Q9P2N6
Immunogen	Recombinant Human KAT8 regulatory NSL complex subunit 3 protein (1-200AA)
Raised In	Rabbit
Species Reactivity	Human
Tested Applications	ELISA, IHC; Recommended dilution: IHC:1:20-1:200
Form	Liquid
Conjugate	Non-conjugated
Storage Buffer	PBS with 0.02% sodium azide, 50% glycerol, pH7.3.
Purification Method	Antigen Affinity Purified
Isotype	IgG
Clonality	Polyclonal
Alias	KAT8 regulatory NSL complex subunit 3 (NSL complex protein NSL3) (Non-specific lethal 3 homolog) (Serum inhibited-related protein) (Testis development protein PRTD), KANSL3, KIAA1310 NSL3 PRTD SI1
Immunogen Species	Homo sapiens (Human)
Research Area	Cell Biology
Target Names	KANSL3

Image



Immunohistochemistry of paraffin-embedded human gastric cancer using CSB-PA882183ESR1HU at dilution of 1:100



Immunohistochemistry of paraffin-embedded human testis tissue using CSB-PA882183ESR1HU at dilution of 1:100



Usage

For Research Use Only. Not for use in diagnostic or therapeutic procedures.