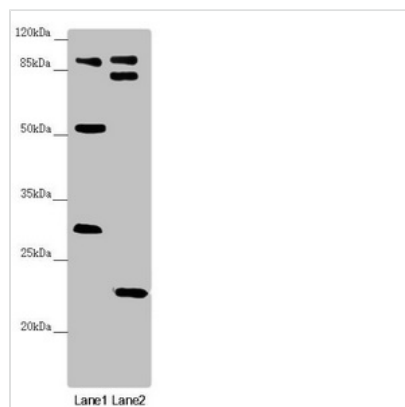




KANSL3 Antibody

Product Code	CSB-PA882183ESR2HU
Storage	Upon receipt, store at -20°C or -80°C. Avoid repeated freeze.
Uniprot No.	Q9P2N6
Immunogen	Recombinant Human KAT8 regulatory NSL complex subunit 3 protein (1-200AA)
Raised In	Rabbit
Species Reactivity	Human, Mouse
Tested Applications	ELISA, WB, IHC; Recommended dilution: WB:1:1000-1:5000, IHC:1:20-1:200
Form	Liquid
Conjugate	Non-conjugated
Storage Buffer	PBS with 0.02% sodium azide, 50% glycerol, pH7.3.
Purification Method	Antigen Affinity Purified
Isotype	IgG
Clonality	Polyclonal
Alias	KAT8 regulatory NSL complex subunit 3 (NSL complex protein NSL3) (Non-specific lethal 3 homolog) (Serum inhibited-related protein) (Testis development protein PRTD), KANSL3, KIAA1310 NSL3 PRTD SI1
Immunogen Species	Homo sapiens (Human)
Research Area	Cell Biology
Target Names	KANSL3

Image



Western blot

All lanes: KANSL3 antibody at 1.68 µg/ml

Lane 1: U251 whole cell lysate

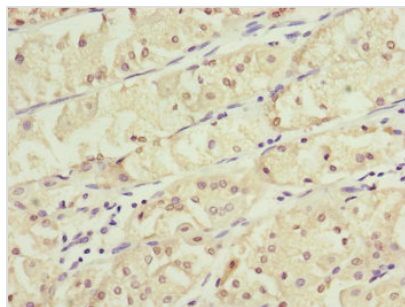
Lane 2: Mouse small intestine tissue

Secondary

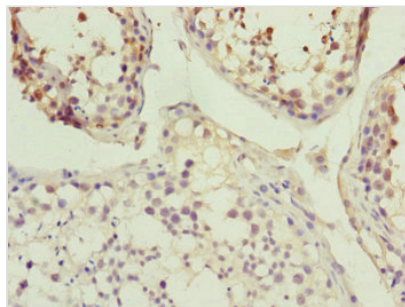
Goat polyclonal to rabbit IgG at 1/10000 dilution

Predicted band size: 96, 84, 94, 81, 17, 59 kDa

Observed band size: 96, 83, 53, 31, 23 kDa



Immunohistochemistry of paraffin-embedded human gastric cancer using CSB-PA882183ESR2HU at dilution of 1:100



Immunohistochemistry of paraffin-embedded human testis tissue using CSB-PA882183ESR2HU at dilution of 1:100