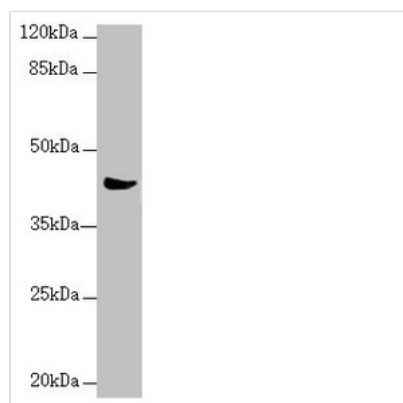




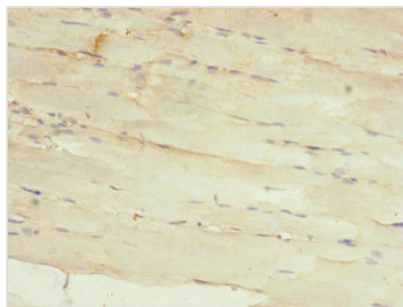
MRPS22 Antibody

Product Code	CSB-PA014908ESR2HU
Storage	Upon receipt, store at -20°C or -80°C. Avoid repeated freeze.
Uniprot No.	P82650
Immunogen	Recombinant Human 28S ribosomal protein S22, mitochondrial protein (1-360AA)
Raised In	Rabbit
Species Reactivity	Human, Mouse
Tested Applications	ELISA, WB, IHC; Recommended dilution: WB:1:1000-1:5000, IHC:1:20-1:200
Form	Liquid
Conjugate	Non-conjugated
Storage Buffer	PBS with 0.02% sodium azide, 50% glycerol, pH7.3.
Purification Method	Antigen Affinity Purified
Isotype	IgG
Clonality	Polyclonal
Alias	28S ribosomal protein S22, mitochondrial (MRP-S22) (S22mt) (Mitochondrial small ribosomal subunit protein mS22), MRPS22, C3orf5 RPMS22
Immunogen Species	Homo sapiens (Human)
Research Area	Epigenetics and Nuclear Signaling
Target Names	MRPS22

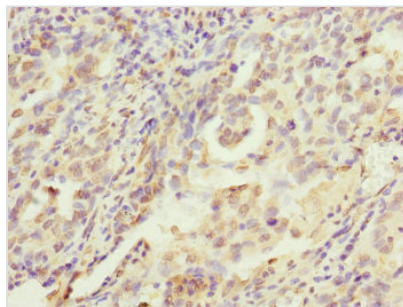
Image



Western blot
 All lanes: MRPS22 antibody at 2.36 µg/ml +
 Mouse liver tissue
 Secondary
 Goat polyclonal to rabbit IgG at 1/10000 dilution
 Predicted band size: 42, 19 kDa
 Observed band size: 42 kDa



Immunohistochemistry of paraffin-embedded human skeletal muscle tissue using CSB-PA014908ESR2HU at dilution of 1:100



Immunohistochemistry of paraffin-embedded human lung cancer using CSB-PA014908ESR2HU at dilution of 1:100