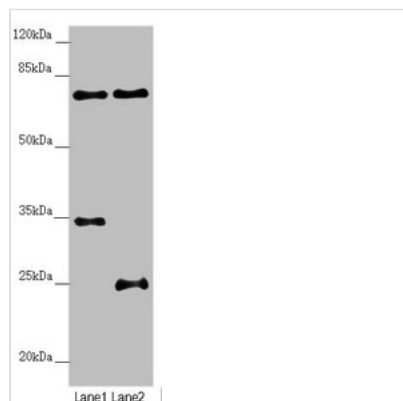




NEDD1 Antibody

Product Code	CSB-PA822820DSR1HU
Storage	Upon receipt, store at -20°C or -80°C. Avoid repeated freeze.
Uniprot No.	Q8NHV4
Immunogen	Recombinant Human Protein NEDD1 protein (411-660AA)
Raised In	Rabbit
Species Reactivity	Human, Mouse
Tested Applications	ELISA, WB, IHC, IP; Recommended dilution: WB:1:1000-1:5000, IHC:1:20-1:200, IP:1:200-1:2000
Form	Liquid
Conjugate	Non-conjugated
Storage Buffer	PBS with 0.02% sodium azide, 50% glycerol, pH7.3.
Purification Method	Antigen Affinity Purified
Isotype	IgG
Clonality	Polyclonal
Alias	Protein NEDD1 (Neural precursor cell expressed developmentally down-regulated protein 1) (NEDD-1), NEDD1
Immunogen Species	Homo sapiens (Human)
Research Area	Epigenetics and Nuclear Signaling
Target Names	NEDD1

Image



Western blot

All lanes: NEDD1 antibody at 3.25µg/ml

Lane 1: Mouse small intestine tissue

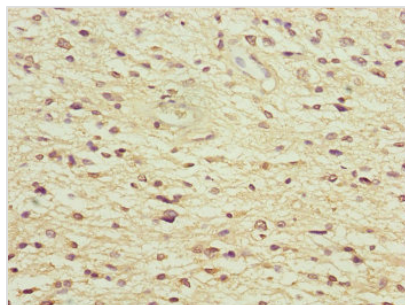
Lane 2: Jurkat whole cell lysate

Secondary

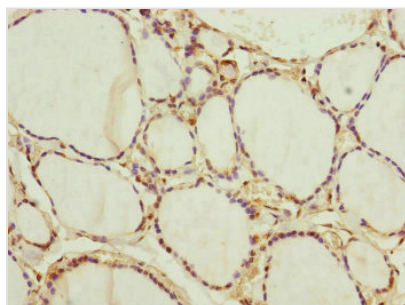
Goat polyclonal to rabbit IgG at 1/10000 dilution

Predicted band size: 72, 63, 73 kDa

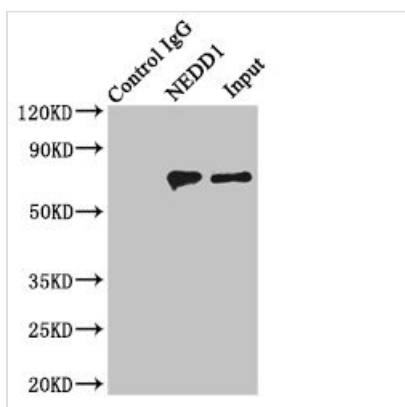
Observed band size: 72 kDa



Immunohistochemistry of paraffin-embedded human glioma using CSB-PA822820DSR1HU at dilution of 1:100



Immunohistochemistry of paraffin-embedded human thyroid tissue using CSB-PA822820DSR1HU at dilution of 1:100



Immunoprecipitating NEDD1 in HeLa whole cell lysate

Lane 1: Rabbit control IgG instead of (1μg) instead of CSB-PA822820DSR1HU in HeLa whole cell lysate. For western blotting, a HRP-conjugated light chain specific antibody was used as the Secondary antibody (1/50000)
 Lane 2: CSB-PA822820DSR1HU (4μg) + HeLa whole cell lysate (500μg)
 Lane 3: HeLa whole cell lysate (20μg)

Usage

For Research Use Only. Not for use in diagnostic or therapeutic procedures.