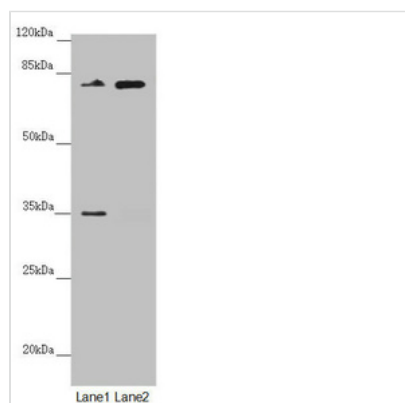




# NEDD1 Antibody

<b>Product Code</b>	CSB-PA822820DSR2HU
<b>Storage</b>	Upon receipt, store at -20°C or -80°C. Avoid repeated freeze.
<b>Uniprot No.</b>	Q8NHV4
<b>Immunogen</b>	Recombinant Human Protein NEDD1 protein (411-660AA)
<b>Raised In</b>	Rabbit
<b>Species Reactivity</b>	Human, Mouse
<b>Tested Applications</b>	ELISA, WB, IHC, IP; Recommended dilution: WB:1:1000-1:5000, IHC:1:20-1:200, IP:1:200-1:2000
<b>Form</b>	Liquid
<b>Conjugate</b>	Non-conjugated
<b>Storage Buffer</b>	PBS with 0.02% sodium azide, 50% glycerol, pH7.3.
<b>Purification Method</b>	Antigen Affinity Purified
<b>Isotype</b>	IgG
<b>Clonality</b>	Polyclonal
<b>Alias</b>	Protein NEDD1 (Neural precursor cell expressed developmentally down-regulated protein 1) (NEDD-1), NEDD1
<b>Immunogen Species</b>	Homo sapiens (Human)
<b>Research Area</b>	Epigenetics and Nuclear Signaling
<b>Target Names</b>	NEDD1

## Image



### Western blot

All lanes: NEDD1 antibody at 2.66µg/ml

Lane 1: Mouse brain tissue

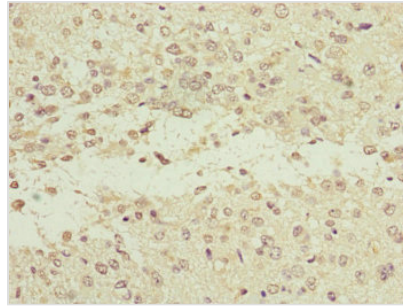
Lane 2: Jurkat whole cell lysate

Secondary

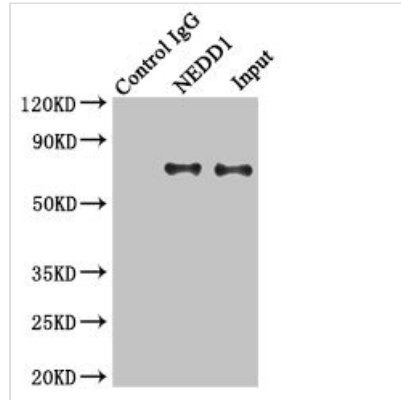
Goat polyclonal to rabbit IgG at 1/10000 dilution

Predicted band size: 72, 63, 73 kDa

Observed band size: 72 kDa



Immunohistochemistry of paraffin-embedded human glioma using CSB-PA822820DSR2HU at dilution of 1:100



Immunoprecipitating NEDD1 in HeLa whole cell lysate

Lane 1: Rabbit control IgG instead of (1 $\mu$ g) instead of CSB-PA822820DSR2HU in HeLa whole cell lysate. For western blotting, a HRP-conjugated light chain specific antibody was used as the Secondary antibody (1/50000)

Lane 2: CSB-PA822820DSR2HU (4 $\mu$ g) + HeLa whole cell lysate (500 $\mu$ g)

Lane 3: HeLa whole cell lysate (20 $\mu$ g)

## Usage

For Research Use Only. Not for use in diagnostic or therapeutic procedures.