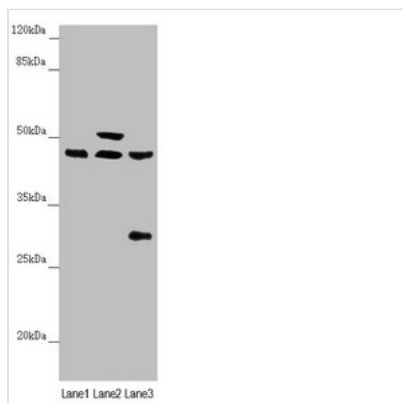




# HAUS8 Antibody

<b>Product Code</b>	CSB-PA863116ESR1HU
<b>Storage</b>	Upon receipt, store at -20°C or -80°C. Avoid repeated freeze.
<b>Uniprot No.</b>	Q9BT25
<b>Immunogen</b>	Recombinant Human HAUS augmin-like complex subunit 8 protein (166-410AA)
<b>Raised In</b>	Rabbit
<b>Species Reactivity</b>	Human, Mouse
<b>Tested Applications</b>	ELISA, WB, IHC, IF; Recommended dilution: WB:1:500-1:2000, IHC:1:20-1:200, IF:1:50-1:200
<b>Form</b>	Liquid
<b>Conjugate</b>	Non-conjugated
<b>Storage Buffer</b>	PBS with 0.02% sodium azide, 50% glycerol, pH7.3.
<b>Purification Method</b>	Antigen Affinity Purified
<b>Isotype</b>	IgG
<b>Clonality</b>	Polyclonal
<b>Alias</b>	HAUS augmin-like complex subunit 8 (HEC1/NDC80-interacting centrosome-associated protein 1) (Sarcoma antigen NY-SAR-48), HAUS8, HICE1
<b>Immunogen Species</b>	Homo sapiens (Human)
<b>Research Area</b>	Cell Biology
<b>Target Names</b>	HAUS8

## Image



### Western blot

All lanes: HAUS8 antibody at 2.35 µg/ml

Lane 1: Mouse kidney tissue

Lane 2: Mouse brain tissue

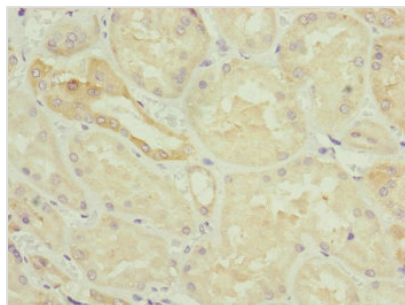
Lane 3: A549 whole cell lysate

### Secondary

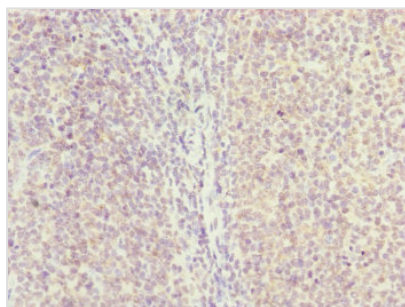
Goat polyclonal to rabbit IgG at 1/10000 dilution

Predicted band size: 45, 39 kDa

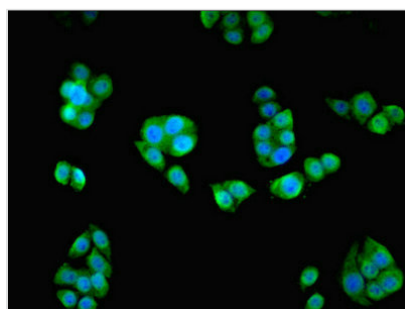
Observed band size: 45, 50, 28 kDa



Immunohistochemistry of paraffin-embedded human kidney tissue using CSB-PA863116ESR1HU at dilution of 1:100



Immunohistochemistry of paraffin-embedded human tonsil tissue using CSB-PA863116ESR1HU at dilution of 1:100



Immunofluorescent analysis of PC-3 cells using CSB-PA863116ESR1HU at dilution of 1:100 and Alexa Fluor 488-conjugated AffiniPure Goat Anti-Rabbit IgG(H+L)

## Usage

For Research Use Only. Not for use in diagnostic or therapeutic procedures.