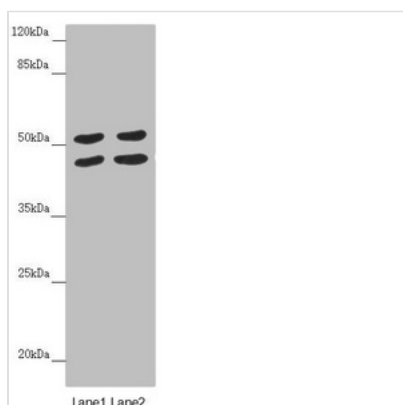




HAUS8 Antibody

Product Code	CSB-PA863116ESR2HU
Storage	Upon receipt, store at -20°C or -80°C. Avoid repeated freeze.
Uniprot No.	Q9BT25
Immunogen	Recombinant Human HAUS augmin-like complex subunit 8 protein (166-410AA)
Raised In	Rabbit
Species Reactivity	Human
Tested Applications	ELISA, WB, IHC, IF; Recommended dilution: WB:1:500-1:2000, IHC:1:20-1:200, IF:1:50-1:200
Form	Liquid
Conjugate	Non-conjugated
Storage Buffer	PBS with 0.02% sodium azide, 50% glycerol, pH7.3.
Purification Method	Antigen Affinity Purified
Isotype	IgG
Clonality	Polyclonal
Alias	HAUS augmin-like complex subunit 8 (HEC1/NDC80-interacting centrosome-associated protein 1) (Sarcoma antigen NY-SAR-48), HAUS8, HICE1
Immunogen Species	Homo sapiens (Human)
Research Area	Cell Biology
Target Names	HAUS8

Image



Western blot

All lanes: HAUS8 antibody at 5.18 µg/ml

Lane 1: Hela whole cell lysate

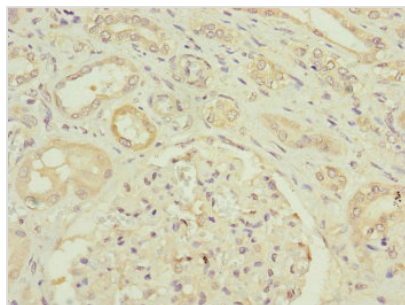
Lane 2: A549 whole cell lysate

Secondary

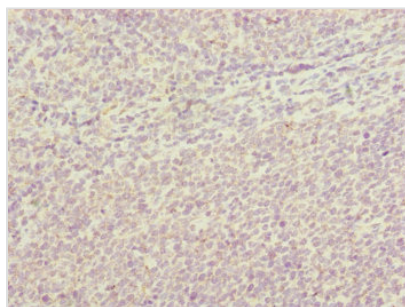
Goat polyclonal to rabbit IgG at 1/10000 dilution

Predicted band size: 45, 39 kDa

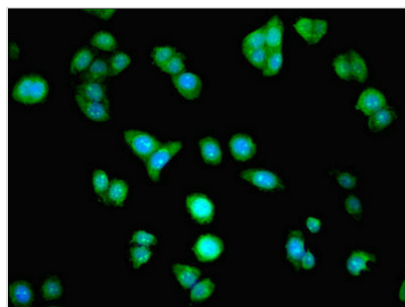
Observed band size: 45, 52 kDa



Immunohistochemistry of paraffin-embedded human kidney tissue using CSB-PA863116ESR2HU at dilution of 1:100



Immunohistochemistry of paraffin-embedded human tonsil tissue using CSB-PA863116ESR2HU at dilution of 1:100



Immunofluorescent analysis of PC-3 cells using CSB-PA863116ESR2HU at dilution of 1:100 and Alexa Fluor 488-conjugated AffiniPure Goat Anti-Rabbit IgG(H+L)

Usage

For Research Use Only. Not for use in diagnostic or therapeutic procedures.