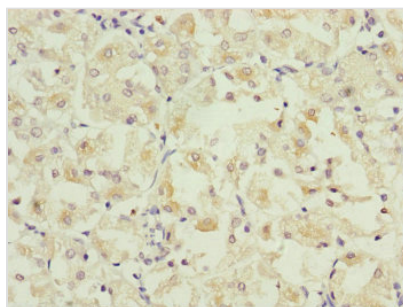




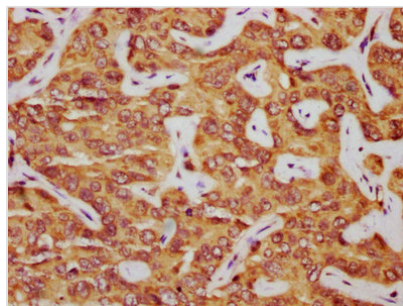
PARD6B Antibody

Product Code	CSB-PA861174DSR1HU
Storage	Upon receipt, store at -20°C or -80°C. Avoid repeated freeze.
Uniprot No.	Q9BYG5
Immunogen	Recombinant Human Partitioning defective 6 homolog beta protein (253-372AA)
Raised In	Rabbit
Species Reactivity	Human
Tested Applications	ELISA, IHC, IF; Recommended dilution: IHC:1:20-1:500, IF:1:50-1:200
Form	Liquid
Conjugate	Non-conjugated
Storage Buffer	PBS with 0.02% sodium azide, 50% glycerol, pH7.3.
Purification Method	Antigen Affinity Purified
Isotype	IgG
Clonality	Polyclonal
Alias	Partitioning defective 6 homolog beta (PAR-6 beta) (PAR-6B), PARD6B, PAR6B
Immunogen Species	Homo sapiens (Human)
Research Area	Signal Transduction
Target Names	PARD6B

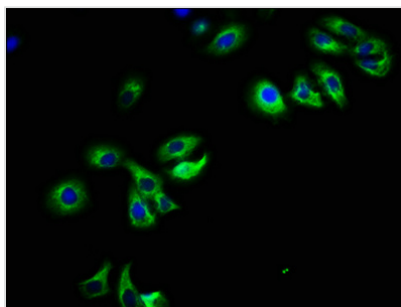
Image



Immunohistochemistry of paraffin-embedded human gastric cancer using CSB-PA861174DSR1HU at dilution of 1:100



IHC image of CSB-PA861174DSR1HU diluted at 1:325 and staining in paraffin-embedded human liver cancer performed on a Leica BondTM system. After dewaxing and hydration, antigen retrieval was mediated by high pressure in a citrate buffer (pH 6.0). Section was blocked with 10% normal goat serum 30min at RT. Then primary antibody (1% BSA) was incubated at 4°C overnight. The primary is detected by a biotinylated secondary antibody and visualized using an HRP conjugated SP system.



Immunofluorescence staining of HepG2 cells with CSB-PA861174DSR1HU at 1:108, counter-stained with DAPI. The cells were fixed in 4% formaldehyde, permeabilized using 0.2% Triton X-100 and blocked in 10% normal Goat Serum. The cells were then incubated with the antibody overnight at 4°C. The secondary antibody was Alexa Fluor 488-conjugated AffiniPure Goat Anti-Rabbit IgG(H+L).