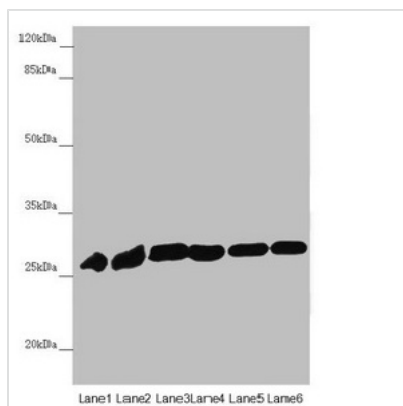




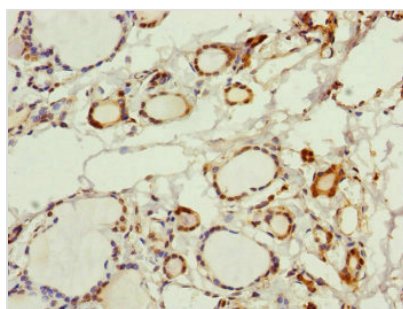
PGLS Antibody

Product Code	CSB-PA017861ESR1HU
Storage	Upon receipt, store at -20°C or -80°C. Avoid repeated freeze.
Uniprot No.	O95336
Immunogen	Recombinant Human 6-phosphogluconolactonase protein (1-258AA)
Raised In	Rabbit
Species Reactivity	Human, Mouse
Tested Applications	ELISA, WB, IHC, IP; Recommended dilution: WB:1:1000-1:5000, IHC:1:20-1:200, IP:1:200-1:2000
Form	Liquid
Conjugate	Non-conjugated
Storage Buffer	PBS with 0.02% sodium azide, 50% glycerol, pH7.3.
Purification Method	Antigen Affinity Purified
Isotype	IgG
Clonality	Polyclonal
Alias	6-phosphogluconolactonase (6PGL) (EC 3.1.1.31), PGLS
Immunogen Species	Homo sapiens (Human)
Research Area	Signal Transduction
Target Names	PGLS

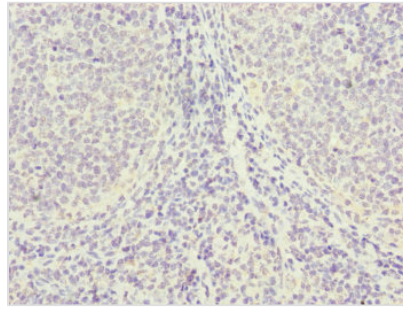
Image



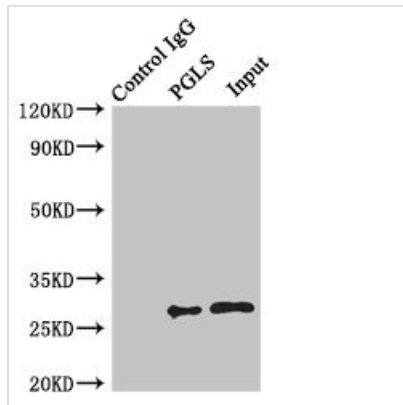
Western blot
 All lanes: PGLS antibody at 4.19µg/ml
 Lane 1: Mouse liver tissue
 Lane 2: Mouse brain tissue
 Lane 3: U251 whole cell lysate
 Lane 4: THP-1 whole cell lysate
 Lane 5: HepG2 whole cell lysate
 Lane 6: Hela whole cell lysate
 Secondary
 Goat polyclonal to rabbit IgG at 1/10000 dilution
 Predicted band size: 28 kDa
 Observed band size: 28 kDa



Immunohistochemistry of paraffin-embedded human thyroid tissue using CSB-PA017861ESR1HU at dilution of 1:100



Immunohistochemistry of paraffin-embedded human tonsil tissue using CSB-PA017861ESR1HU at dilution of 1:100



Immunoprecipitating PGLS in U251 whole cell lysate

Lane 1: Rabbit control IgG instead of (1µg) instead of CSB-PA017861ESR1HU in U251 whole cell lysate. For western blotting, a HRP-conjugated light chain specific antibody was used as the Secondary antibody (1/50000)
 Lane 2: CSB-PA017861ESR1HU (4µg) + U251 whole cell lysate (500µg)
 Lane 3: U251 whole cell lysate (20µg)

Usage

For Research Use Only. Not for use in diagnostic or therapeutic procedures.