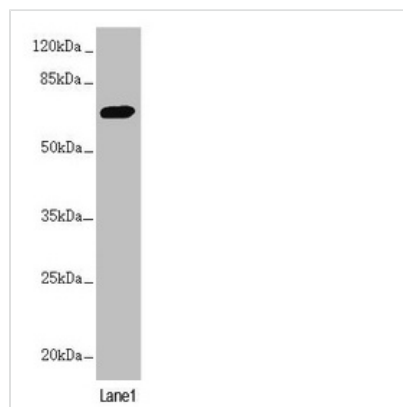




PPP2R3B Antibody

Product Code	CSB-PA896533ESR2HU
Storage	Upon receipt, store at -20°C or -80°C. Avoid repeated freeze.
Uniprot No.	Q9Y5P8
Immunogen	Recombinant Human Serine/threonine-protein phosphatase 2A regulatory subunit B" subunit beta protein (356-575AA)
Raised In	Rabbit
Species Reactivity	Human
Tested Applications	ELISA, WB, IHC; Recommended dilution: WB:1:1000-1:5000, IHC:1:20-1:200
Form	Liquid
Conjugate	Non-conjugated
Storage Buffer	PBS with 0.02% sodium azide, 50% glycerol, pH7.3.
Purification Method	Antigen Affinity Purified
Isotype	IgG
Clonality	Polyclonal
Alias	Serine/threonine-protein phosphatase 2A regulatory subunit B" subunit beta (PP2A subunit B isoform PR48) (Protein phosphatase 2A 48 kDa regulatory subunit), PPP2R3B, PPP2R3L
Immunogen Species	Homo sapiens (Human)
Research Area	Signal Transduction
Target Names	PPP2R3B

Image



Western blot

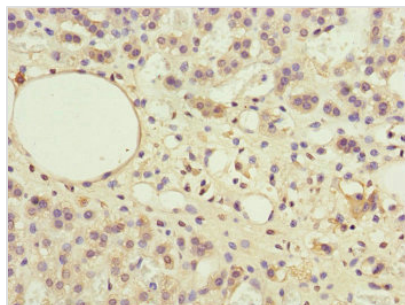
All lanes: PPP2R3B antibody at 2.1µg/ml + HL60 whole cell lysate

Secondary

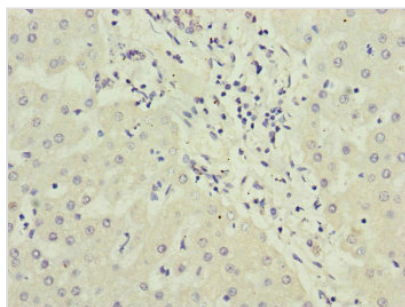
Goat polyclonal to rabbit IgG at 1/10000 dilution

Predicted band size: 66, 21 kDa

Observed band size: 66 kDa



Immunohistochemistry of paraffin-embedded human adrenal gland tissue using CSB-PA896533ESR2HU at dilution of 1:100



Immunohistochemistry of paraffin-embedded human liver cancer using CSB-PA896533ESR2HU at dilution of 1:100

Usage

For Research Use Only. Not for use in diagnostic or therapeutic procedures.