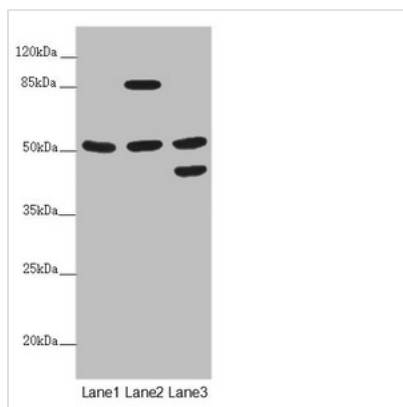




PPP2R3C Antibody

Product Code	CSB-PA836171ESR1HU
Storage	Upon receipt, store at -20°C or -80°C. Avoid repeated freeze.
Uniprot No.	Q969Q6
Immunogen	Recombinant Human Serine/threonine-protein phosphatase 2A regulatory subunit B" subunit gamma protein (1-160AA)
Raised In	Rabbit
Species Reactivity	Human
Tested Applications	ELISA, WB, IHC; Recommended dilution: WB:1:1000-1:5000, IHC:1:20-1:200
Form	Liquid
Conjugate	Non-conjugated
Storage Buffer	PBS with 0.02% sodium azide, 50% glycerol, pH7.3.
Purification Method	Antigen Affinity Purified
Isotype	IgG
Clonality	Polyclonal
Alias	Serine/threonine-protein phosphatase 2A regulatory subunit B" subunit gamma (Protein phosphatase subunit G5PR) (Rhabdomyosarcoma antigen MU-RMS-40.6A/6C), PPP2R3C, C14orf10 G5PR
Immunogen Species	Homo sapiens (Human)
Research Area	Neuroscience
Target Names	PPP2R3C

Image



Western blot

All lanes: PPP2R3C antibody at 5.11 µg/ml

Lane 1: HepG2 whole cell lysate

Lane 2: Jurkat whole cell lysate

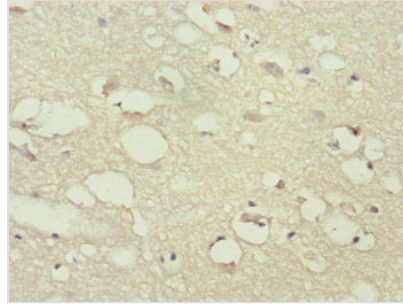
Lane 3: A549 whole cell lysate

Secondary

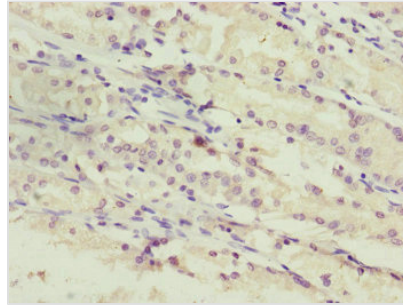
Goat polyclonal to rabbit IgG at 1/10000 dilution

Predicted band size: 54, 40 kDa

Observed band size: 54, 85, 45 kDa



Immunohistochemistry of paraffin-embedded human brain tissue using CSB-PA836171ESR1HU at dilution of 1:100



Immunohistochemistry of paraffin-embedded human gastric cancer using CSB-PA836171ESR1HU at dilution of 1:100

Usage

For Research Use Only. Not for use in diagnostic or therapeutic procedures.