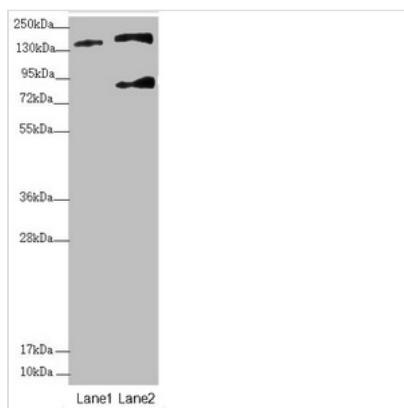




SFI1 Antibody

Product Code	CSB-PA021132ESR2HU
Storage	Upon receipt, store at -20°C or -80°C. Avoid repeated freeze.
Uniprot No.	A8K8P3
Immunogen	Recombinant Human Protein SFI1 homolog protein (1003-1242AA)
Raised In	Rabbit
Species Reactivity	Human
Tested Applications	ELISA, WB, IHC; Recommended dilution: WB:1:1000-1:5000, IHC:1:20-1:200
Form	Liquid
Conjugate	Non-conjugated
Storage Buffer	PBS with 0.02% sodium azide, 50% glycerol, pH7.3.
Purification Method	Antigen Affinity Purified
Isotype	IgG
Clonality	Polyclonal
Alias	Protein SFI1 homolog (hSFI1), SFI1, KIAA0542
Immunogen Species	Homo sapiens (Human)
Research Area	Others
Target Names	SFI1

Image



Western blot

All lanes: SFI1 antibody at 2.9 µg/ml

Lane 1: A549 whole cell lysate

Lane 2: HepG2 whole cell lysate

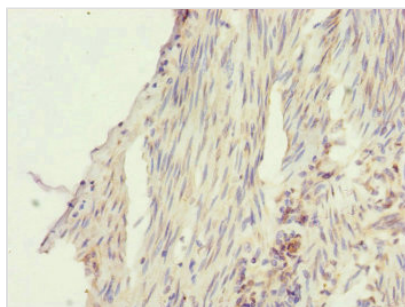
Secondary

Goat polyclonal to rabbit IgG at 1/10000 dilution

Predicted band size: 148, 144, 139, 122, 118,

142, 137 kDa

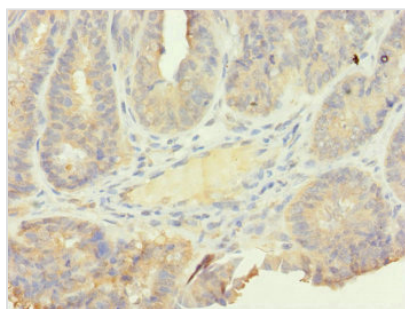
Observed band size: 148, 85 kDa



Immunohistochemistry of paraffin-embedded

human bladder cancer using CSB-

PA021132ESR2HU at dilution of 1:100



Immunohistochemistry of paraffin-embedded human endometrial cancer using CSB-PA021132ESR2HU at dilution of 1:100

Usage

For Research Use Only. Not for use in diagnostic or therapeutic procedures.