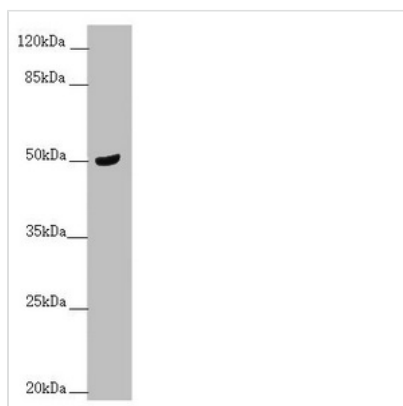




TAMM41 Antibody

Product Code	CSB-PA856905ESR2HU
Storage	Upon receipt, store at -20°C or -80°C. Avoid repeated freeze.
Uniprot No.	Q96BW9
Immunogen	Recombinant Human Phosphatidate cytidyltransferase, mitochondrial protein (161-452AA)
Raised In	Rabbit
Species Reactivity	Human, Mouse
Tested Applications	ELISA, WB, IHC, IF; Recommended dilution: WB:1:500-1:2000, IHC:1:20-1:200, IF:1:50-1:200
Form	Liquid
Conjugate	Non-conjugated
Storage Buffer	PBS with 0.02% sodium azide, 50% glycerol, pH7.3.
Purification Method	Antigen Affinity Purified
Isotype	IgG
Clonality	Polyclonal
Alias	Phosphatidate cytidyltransferase, mitochondrial (EC 2.7.7.41) (CDP-diacylglycerol synthase) (CDP-DAG synthase) (Mitochondrial translocator assembly and maintenance protein 41 homolog) (TAM41), TAMM41, C3orf31
Immunogen Species	Homo sapiens (Human)
Research Area	Signal Transduction
Target Names	TAMM41

Image



Western blot

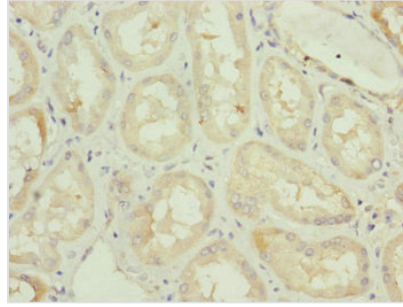
All lanes: TAMM41 antibody at 1.68 µg/ml +
Mouse brain tissue

Secondary

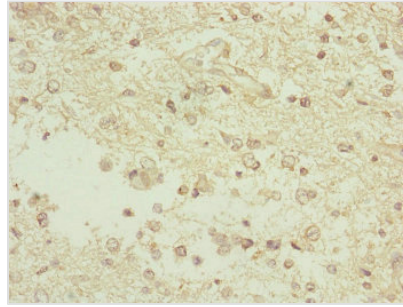
Goat polyclonal to rabbit IgG at 1/10000 dilution

Predicted band size: 52, 36, 39 kDa

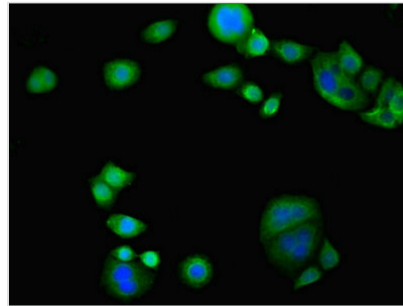
Observed band size: 52 kDa



Immunohistochemistry of paraffin-embedded human kidney tissue using CSB-PA856905ESR2HU at dilution of 1:100



Immunohistochemistry of paraffin-embedded human glioma using CSB-PA856905ESR2HU at dilution of 1:100



Immunofluorescent analysis of PC-3 cells using CSB-PA856905ESR2HU at dilution of 1:100 and Alexa Fluor 488-conjugated AffiniPure Goat Anti-Rabbit IgG(H+L)

Usage

For Research Use Only. Not for use in diagnostic or therapeutic procedures.