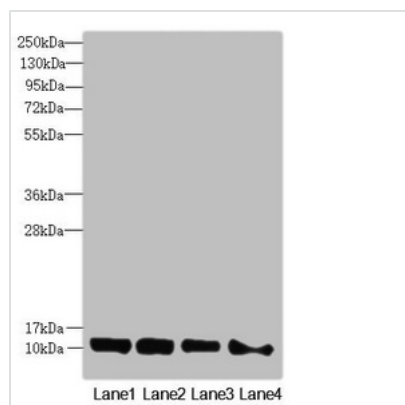




DNAJC19 Antibody

Product Code	CSB-PA853400ESR1HU
Storage	Upon receipt, store at -20°C or -80°C. Avoid repeated freeze.
Uniprot No.	Q96DA6
Immunogen	Recombinant Human Mitochondrial import inner membrane translocase subunit TIM14 protein (1-116AA)
Raised In	Rabbit
Species Reactivity	Human, Mouse
Tested Applications	ELISA, WB, IHC, IP; Recommended dilution: WB:1:1000-1:5000, IHC:1:20-1:200, IP:1:200-1:2000
Form	Liquid
Conjugate	Non-conjugated
Storage Buffer	PBS with 0.02% sodium azide, 50% glycerol, pH7.3.
Purification Method	Antigen Affinity Purified
Isotype	IgG
Clonality	Polyclonal
Alias	Mitochondrial import inner membrane translocase subunit TIM14 (DnaJ homolog subfamily C member 19), DNAJC19, TIM14 TIMM14
Immunogen Species	Homo sapiens (Human)
Research Area	Signal Transduction
Target Names	DNAJC19

Image



Western blot

All lanes: DNAJC19 antibody at 0.96µg/ml

Lane 1: Mouse kidney tissue

Lane 2: A549 whole cell lysate

Lane 3: HL60 whole cell lysate

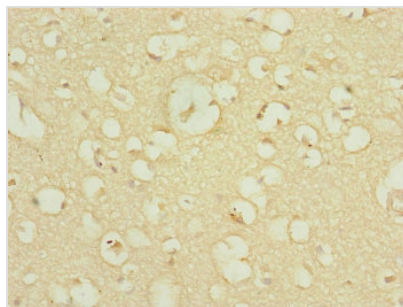
Lane 4: Hela whole cell lysate

Secondary

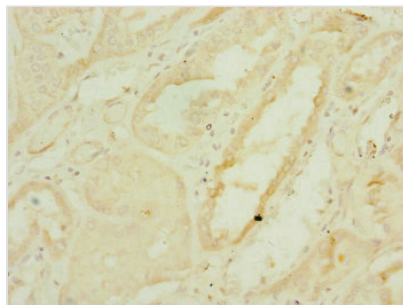
Goat polyclonal to rabbit IgG at 1/10000 dilution

Predicted band size: 13, 11 kDa

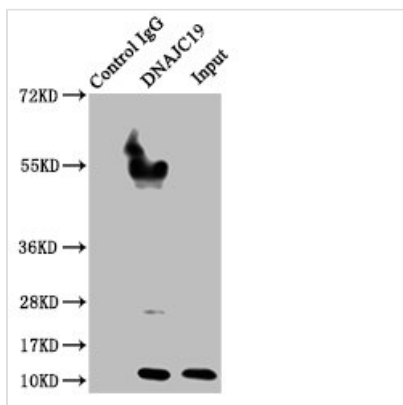
Observed band size: 13 kDa



Immunohistochemistry of paraffin-embedded human brain tissue using CSB-PA853400ESR1HU at dilution of 1:100



Immunohistochemistry of paraffin-embedded human kidney tissue using CSB-PA853400ESR1HU at dilution of 1:100



Immunoprecipitating DNAJC19 in HeLa whole cell lysate
 Lane 1: Rabbit control IgG instead of CSB-PA853400ESR1HU in HeLa whole cell lysate. For western blotting, a HRP-conjugated Protein G antibody was used as the secondary antibody (1/2000)
 Lane 2: CSB-PA853400ESR1HU (8μg) + HeLa whole cell lysate (500μg)
 Lane 3: HeLa whole cell lysate (10μg)