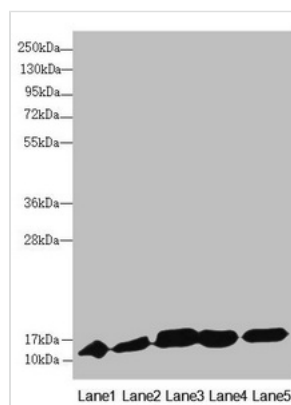




DNAJC19 Antibody

| | |
|----------------------------|---|
| Product Code | CSB-PA853400ESR2HU |
| Storage | Upon receipt, store at -20°C or -80°C. Avoid repeated freeze. |
| Uniprot No. | Q96DA6 |
| Immunogen | Recombinant Human Mitochondrial import inner membrane translocase subunit TIM14 protein (1-116AA) |
| Raised In | Rabbit |
| Species Reactivity | Human, Mouse |
| Tested Applications | ELISA, WB, IHC; Recommended dilution: WB:1:1000-1:5000, IHC:1:20-1:200 |
| Form | Liquid |
| Conjugate | Non-conjugated |
| Storage Buffer | PBS with 0.02% sodium azide, 50% glycerol, pH7.3. |
| Purification Method | Antigen Affinity Purified |
| Isotype | IgG |
| Clonality | Polyclonal |
| Alias | Mitochondrial import inner membrane translocase subunit TIM14 (DnaJ homolog subfamily C member 19), DNAJC19, TIM14 TIMM14 |
| Immunogen Species | Homo sapiens (Human) |
| Research Area | Signal Transduction |
| Target Names | DNAJC19 |

Image



Western blot

All lanes: DNAJC19 antibody at 0.9µg/ml

Lane 1: Mouse lung tissue

Lane 2: Mouse kidney tissue

Lane 3: A549 whole cell lysate

Lane 4: HL60 whole cell lysate

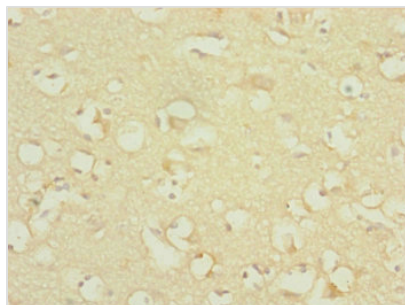
Lane 5: Hela whole cell lysate

Secondary

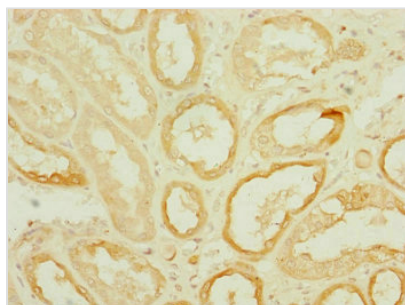
Goat polyclonal to rabbit IgG at 1/10000 dilution

Predicted band size: 13, 11 kDa

Observed band size: 13 kDa



Immunohistochemistry of paraffin-embedded human brain tissue using CSB-PA853400ESR2HU at dilution of 1:100



Immunohistochemistry of paraffin-embedded human kidney tissue using CSB-PA853400ESR2HU at dilution of 1:100