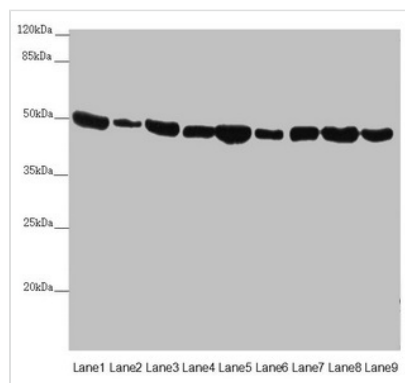




EEF1G Antibody

| | |
|----------------------------|--|
| Product Code | CSB-PA007433ESR1HU |
| Storage | Upon receipt, store at -20°C or -80°C. Avoid repeated freeze. |
| Uniprot No. | P26641 |
| Immunogen | Recombinant Human Elongation factor 1-gamma protein (168-437AA) |
| Raised In | Rabbit |
| Species Reactivity | Human, Mouse |
| Tested Applications | ELISA, WB, IHC; Recommended dilution: WB:1:1000-1:5000, IHC:1:20-1:200 |
| Form | Liquid |
| Conjugate | Non-conjugated |
| Storage Buffer | PBS with 0.02% sodium azide, 50% glycerol, pH7.3. |
| Purification Method | Antigen Affinity Purified |
| Isotype | IgG |
| Clonality | Polyclonal |
| Alias | Elongation factor 1-gamma (EF-1-gamma) (eEF-1B gamma), EEF1G, EF1G |
| Immunogen Species | Homo sapiens (Human) |
| Research Area | Epigenetics and Nuclear Signaling |
| Target Names | EEF1G |

Image



Western blot

All lanes: EEF1G antibody at 0.73µg/ml

Lane 1: Mouse gonadal tissue

Lane 2: Mouse brain tissue

Lane 3: HL60 whole cell lysate

Lane 4: NIH/3T3 whole cell lysate

Lane 5: PC-3 whole cell lysate

Lane 6: HepG2 whole cell lysate

Lane 7: Hela whole cell lysate

Lane 8: 293T whole cell lysate

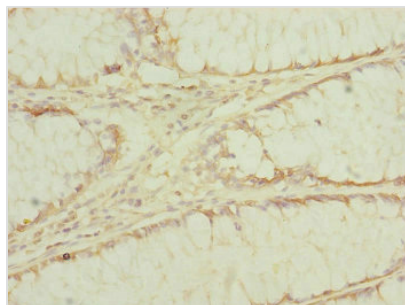
Lane 9: RAW264.7 whole cell lysate

Secondary

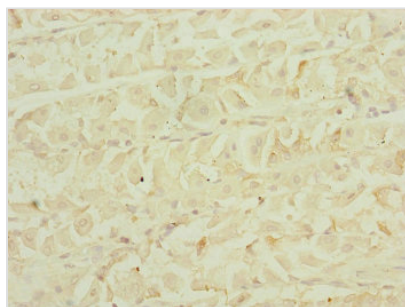
Goat polyclonal to rabbit IgG at 1/10000 dilution

Predicted band size: 51, 57 kDa

Observed band size: 51 kDa



Immunohistochemistry of paraffin-embedded human colon cancer using CSB-PA007433ESR1HU at dilution of 1:100



Immunohistochemistry of paraffin-embedded human gastric cancer using CSB-PA007433ESR1HU at dilution of 1:100

Usage

For Research Use Only. Not for use in diagnostic or therapeutic procedures.